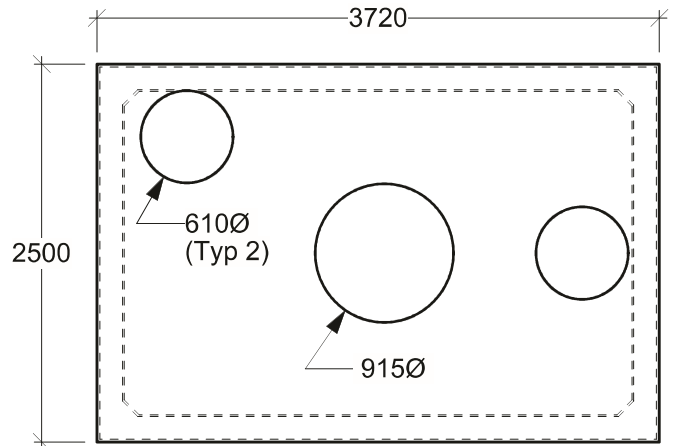
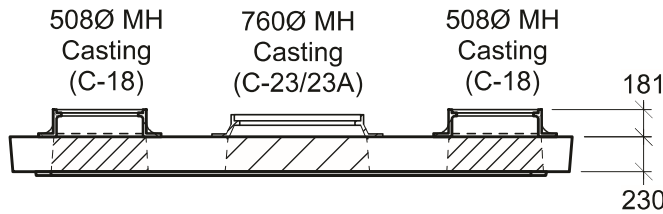


**Plan View - Chamber**

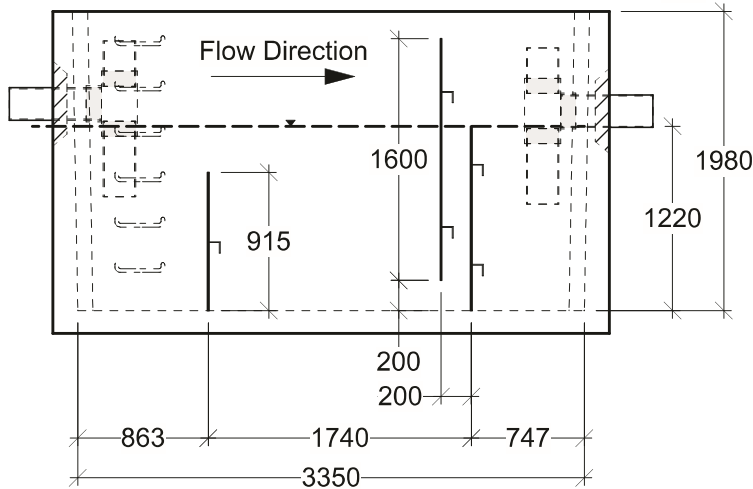
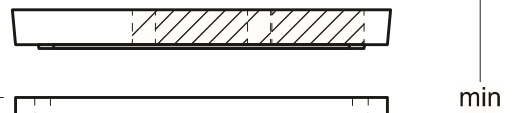


**Plan View - Roof Slab**

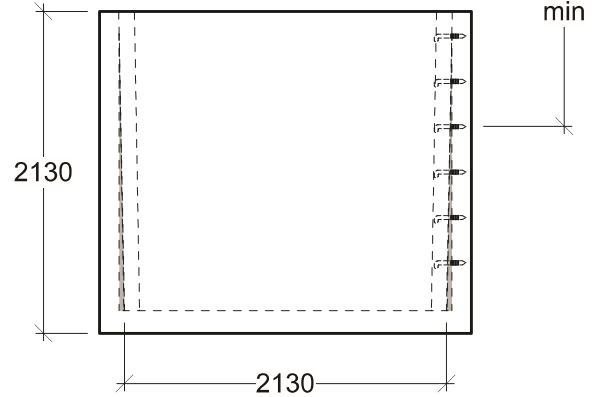
H-20 Traffic Load Rated



Typical Minimum Depth from Grade to Outlet Invert with MH Castings = 1170 mm



**Side View**



**End View**

**General Notes:**

- Product manufactured in accordance with CSA A23.4
- Lift Points Provided (See Shop Drawing for Quantity & Locations)
- Designed for Roadway Use - H-20 Traffic Loading
- Installation of T-Pipe Assemblies Recommended - Installed by Others
- Standard Mild Steel Baffles - Optional Galvanized Baffles
- Up-gradable with Facet "M-Pak" Coalescing Plate System - Design/Build
- Site Installation, Backfilling & Suitability for Use is the responsibility of others



19060 - 54th Avenue  
Surrey, B.C. V3S 8E5

Tel (604) 576-1808  
info@aeconcrete.com

**332120 Meter Oil Interceptor (API)**

Oil Int: 37,820 lbs / 17,170 kgs

Scale: 1:50 mm

Rev: 28Jun08

Dwg#: **VCMC-OI-ZZZZ-API-C**