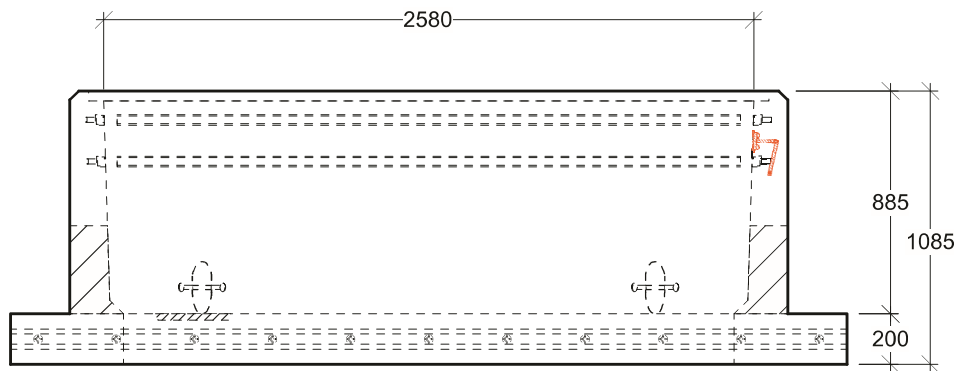
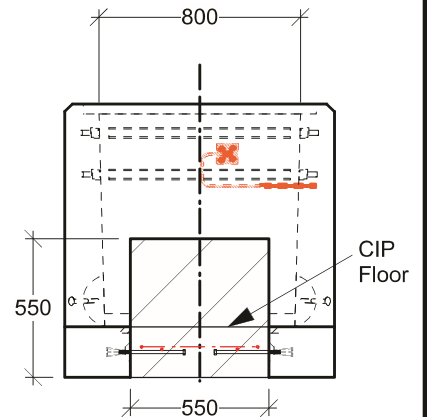


Plan View



Side View



End View

General Notes:

- Product manufactured in accordance with CSA A23.4
- Lift Points Provided (See Shop Drawing for Quantity & Locations)
- Designed for BC Hydro Standard ES54 U1-02 R3 (2013) - Medium Duty
- Site Installation, Backfilling & Suitability for Use is the responsibility of others
- Installation of Dowels, Rebar & Pouring Floor By Others



19060 - 54th Avenue
Surrey, B.C. V3S 8E5

Tel (604) 576-1808
info@aeconcrete.com

832 Elec Vault - Bottomless w/ Footing

Vault: 6,900 lbs / 3,130 kgs

Scale: 1:25 mm

Rev: 05May17

Dwg#: **SVTZ-2A-F832-C**