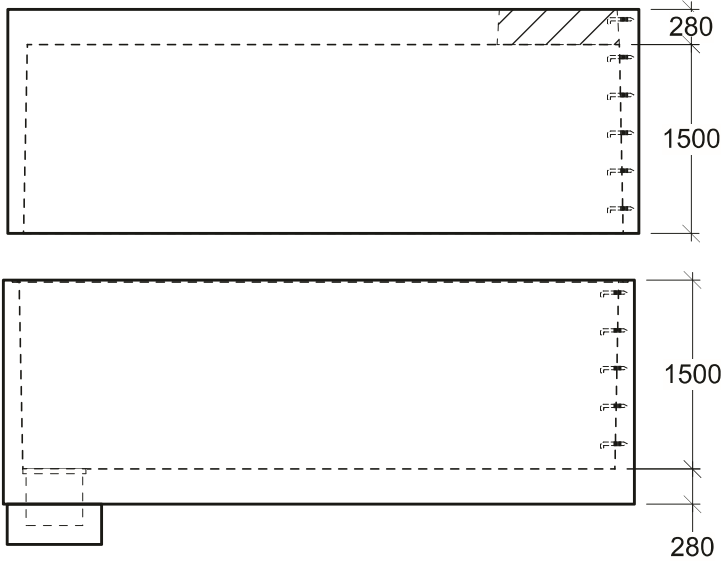
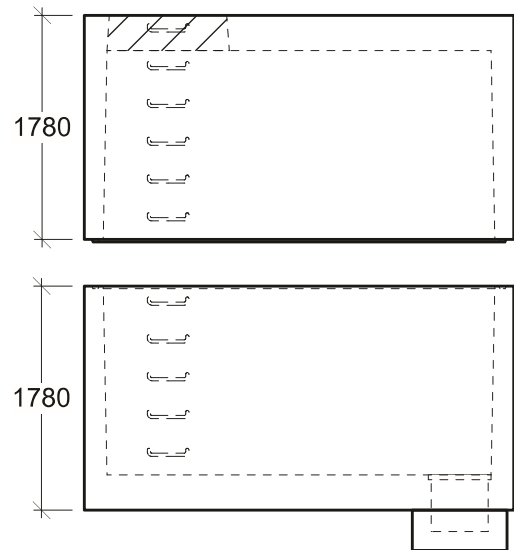


Plan View - Top

Plan View - Bottom



Side View



End View

General Notes:

- Product manufactured in accordance with CSA A23.4
- Lift Points Provided (See Shop Drawing for Quantity & Locations)
- Designed for Roadway Use - H-20 Traffic Loading
- Design and Provision of Thrust Blocks is the responsibility of others
- Site Installation, Backfilling & Suitability for Use is the responsibility of others



19060 - 54th Avenue
Surrey, B.C. V3S 8E5

Tel (604) 576-1808
info@aeconcrete.com

473030 Chamber

Top: 46,600 lbs / 21,140 kgs
Btm: 48,300 lbs / 21,910 kgs

Scale: 1:60 mm

Rev: 27May16

Dwg#: **VC47-20-3030-C**