

## Streetlight Base & Traffic Listings

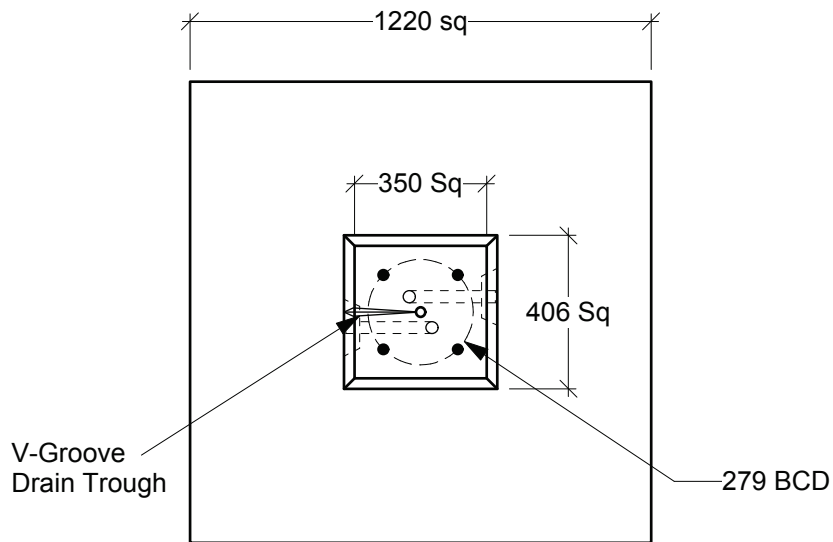
<u>Drawing Number</u>	<u>Item Description</u>	<u>Product Size</u> (Length X Width X Depth in mm)
SFR1-25-R197-3Z2Z-C	<b>Footing Pedestal Base</b>	350 sq x 1220
SFR1-25-R269-SERV-C	<b>Footing Pedestal Service Base</b>	550 sq x 1220
SS40-25-R197-3Z2Z-C	<b>405 x 405 x 1220 High Square Base</b>	405 sq x 1220
SS60-25-R269-SERV-C	<b>610 x 610 x 1220 High Square Service Base</b>	610 sq x 1220
SPC2-25-R197-3Z2Z-C	<b>Pyramid Base</b>	295 to 610 sq x 1220
SPC3-25-R269-SERV-C	<b>Pyramid Service Base</b>	410 to 750 sq x 1220
SPA1-25-R197-5Z1Z-C	<b>Highway Application 1 Pyramid Base</b>	500 to 770 sq x 930
SPA3-25-R197-5Z1Z-C	<b>Highway Application 3 Pyramid Base</b>	490 to 840 sq x 1250
SP18-25-R197-3Z2Z-C	<b>1800 Pyramid Parking Lot Base</b>	350 to 740 sq x 1800
SP21-25-R197-3Z2Z-C	<b>2100 Pyramid Parking Lot Base</b>	350 to 800 sq x 2100
SLMM-33-000P-C	<b>MMCD Type P Controller Base</b>	1220 x 760 x 900
SLSU-33-0900-C	<b>Surrey Controller Base</b>	910 x 760 x 880
SLNH-33-0900-C	<b>MoT Controller Base (K/O Style)</b>	1130 x 760 x 900
SRAB-25-F197-5Z1Z-C	<b>MoT &amp; MMCD Type A Round Base</b> <b>MoT &amp; MMCD Type B Round Base</b>	500Ø x 1200 500Ø x 1500
SPC0-25-F197-5Z1Z-C	<b>MoT Type C Pyramid Base</b>	400 to 1000 sq x 1500
SPC0-25-F197-3Z2Z-C	<b>MMCD Type C Pyramid Base</b>	400 to 1000 sq x 1500
SPC1-25-F269-SERV-C	<b>MMCD Type C1 Service Base</b>	450 to 1000 sq x 1500
SPC2-25-F197-3Z2Z-C	<b>MMCD Type C2 Base</b>	295 to 610 sq x 1220
SPC3-25-F269-SERV-C	<b>MMCD Type C3 Service Base</b>	465 to 750 sq x 1220

## Streetlight Base & Traffic Listings

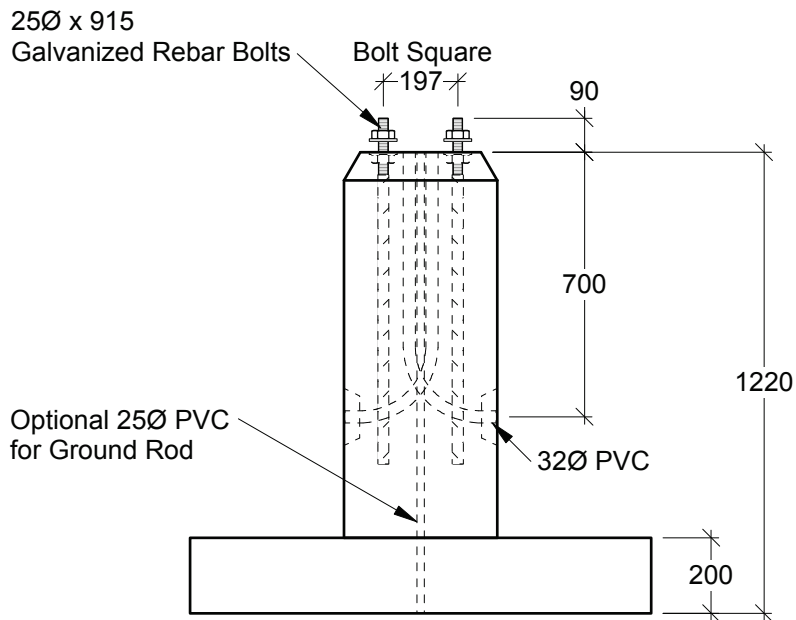
<u>Drawing Number</u>	<u>Item Description</u>	<u>Product Size</u> (Length X Width X Depth in mm)
SFC4-25-F197-3Z2Z-C	<b>MMCD Type C4 Base</b>	450 sq x 1220
SFC5-25-F269-3Z2Z-C	<b>MMCD Type C5 Service Base</b>	450 sq x 1220
SPD2-32-F216-5Z1Z-C	<b>MoT Type D2 Pyramid Base</b>	400 to 1100 sq x 1800
SPE2-25-F197-5Z1Z-C	<b>MoT &amp; MMCD Type E2 Pyramid Base</b>	400 to 1100 sq x 1800
SPSF-25-D243-3Z2Z-C	<b>MoT &amp; MMCD Type F2 &amp; S2 Pyramid Bases</b>	500 to 1240 sq x 2100
SPL2-38-F276-5Z1Z-C	<b>MoT &amp; MMCD Type L2 Pyramid Base</b>	500 to 1300 sq x 2300
SRT1-25-F197-PZ1Z-C	<b>MoT Sign Post Base - Type 1</b> <b>MoT Sign Post Base - Type 2</b>	300Ø x 600 300Ø x 800
SLFL-30-0400-C	<b>MoT &amp; MMCD Post Mounted Flasher Base</b>	300Ø x 400
SLCP-30-0450-C	<b>CP Rail Base</b>	845 x 290 x 1220
B937-00-0305-C	<b>B937 Top / Extension 305 High</b>	433 x 261 x 305 i.d.
B937-00-0150-C	<b>B937 Top / Extension 152 High</b>	433 x 261 x 152 i.d.
B937-ZZ-LIDS-C	<b>B937 Cast Iron &amp; Steel Covers</b>	457 x 285 x 44
B937-N3-LREC-C	<b>B937 Box w/ Tamper Proof Lid Options</b>	433 x 261 x 305 i.d.
T266-N3-ZZZZ-C	<b>T266 Service Box - Complete</b> Available as Individual Sections (2 Sections + Base + Lid)	718 x 438 x 750 i.d.
T266-00-0150-C	<b>T266 Top / Extension 150 High</b>	712 x 432 x 200 i.d.
5686-68-MOTH-C	<b>5686 MoT Pullbox</b> c/w Base, Bottom, Top and Bolt Down Checker Plate Cover	860 x 560 x 870 i.d.
5686-00-0150-C	<b>5686 Top / Extension 150 High</b>	860 x 560 x 180 i.d.
SVZZ-2B-4040-C	<b>4040 Service Vault</b>	755 x 755 x 765 i.d.
SVZZ-LIDS-4040-C	<b>4040 Service Vault Covers,</b> Concrete Collar w/ Steel Lids, Concrete Lids (3), Cast Iron Cover	Varies

## Streetlight Base & Traffic Listings

<b><u>Drawing Number</u></b>	<b><u>Item Description</u></b>	<b><u>Product Size</u></b> (Length X Width X Depth in mm)
SVZZ-C2-4040-C	<b>4040 Service Vault Riser 150 High</b>	830 x 830 x 150 i.d.
SVHZ-2B-1200-C	<b>1.2m Highways Medium Junction Vault w/ Collar</b>	970 x 970 x 950 i.d.
SVVZ-2A-0243-C	<b>243 MMCD Vault w/ Lid Assembly (Bottomless)</b>	1220 x 610 x 960 i.d.
SVVZ-20-0243-C	<b>243 Custom Vault w/ Collar and Lid Assembly</b>	1220 x 610 x 965 i.d.
VC21-20-MOTH-C	<b>2122 MoT Communications Vault</b>	2030 x 1210 x 1970 i.d.



**Plan View**



**Side View**

**Customizations Available:**

- Bolt Size & Type
- Bolt Square (247 max)
- BCD (350 max)
- Duct Size
- Duct Quantity
- Duct Orientation
- Reinforcing

**General Notes:**

- Product manufactured in accordance with CSA A23.4
- Lift Points Provided (See Shop Drawing for Quantity & Locations)
- Site Installation, Backfilling, Suitability for Use and Engineering Design Approval is the responsibility of others



19060 - 54th Avenue  
Surrey, B.C. V3S 8E5

Tel (604) 576-1808  
info@aeconcrete.com

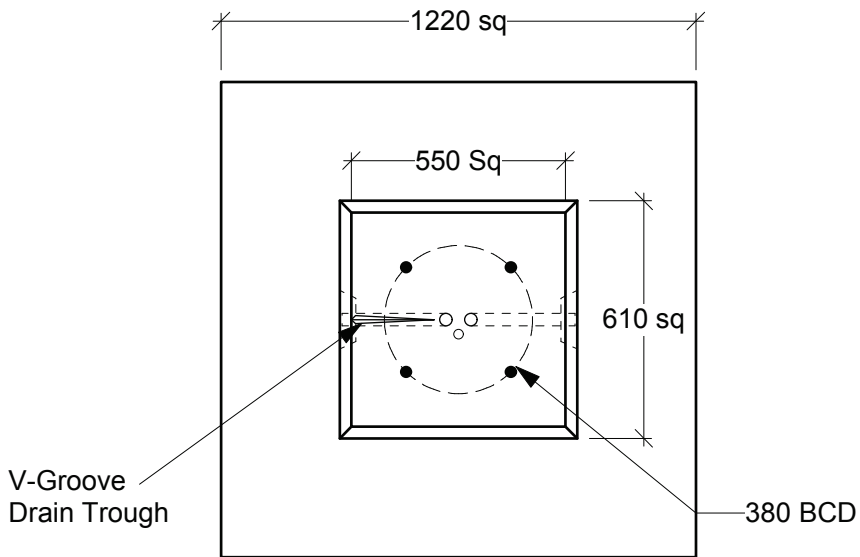
**Footing Pedestal Base**

Base: 2,590 lbs / 1,180 kgs

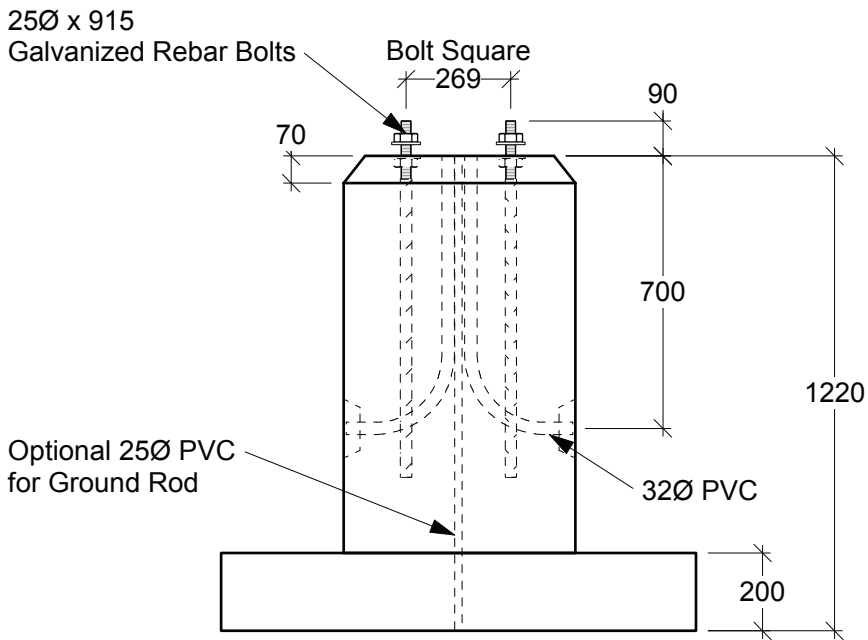
Scale: 1:20 mm

Rev: 22Jul13

Dwg#: **SFR1-25-R197-3Z2Z-C**



**Plan View**



**Side View**

**Customizations Available:**

- Bolt Size & Type
- Bolt Square (389 max)
- BCD (550 max)
- Duct Size
- Duct Quantity
- Duct Orientation
- Reinforcing

**General Notes:**

- Product manufactured in accordance with CSA A23.4
- Lift Points Provided (See Shop Drawing for Quantity & Locations)
- Site Installation, Backfilling, Suitability for Use and Engineering Design Approval is the responsibility of others



19060 - 54th Avenue  
Surrey, B.C. V3S 8E5

Tel (604) 576-1808  
info@aeconcrete.com

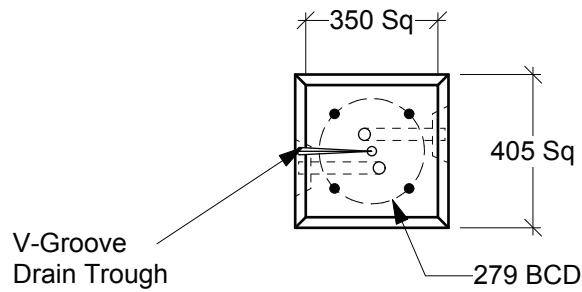
**Footing Pedestal Service Base**

Base: 3,760 lbs / 1,710 kgs

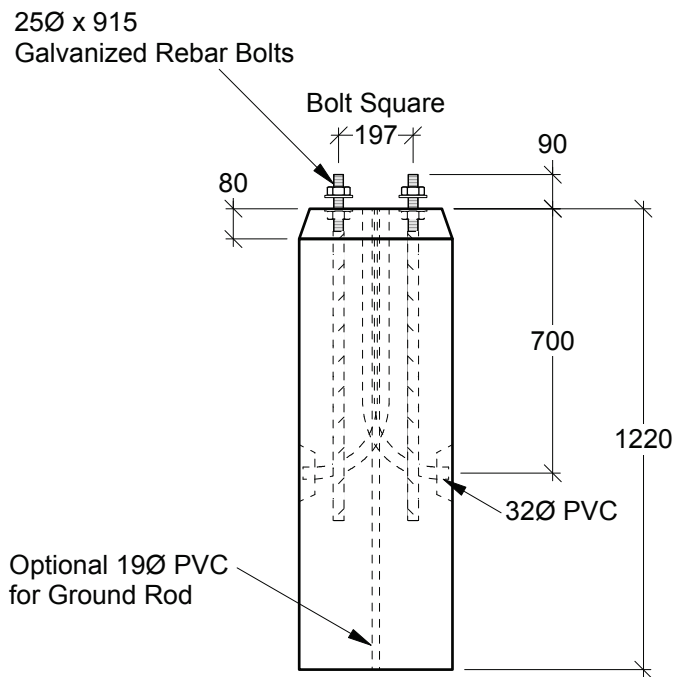
Scale: 1:20 mm

Rev: 22Jul13

Dwg#: **SFR1-25-R269-SERV-C**



**Plan View**



**Side View**

**General Notes:**

- Product manufactured in accordance with CSA A23.4
- Lift Points Provided (See Shop Drawing for Quantity & Locations)
- Site Installation, Backfilling, Suitability for Use and Engineering Design Approval is the responsibility of others

**Customizations Available:**

- Bolt Size & Type
- Bolt Square (247 max)
- BCD (350 max)
- Duct Size
- Duct Quantity
- Duct Orientation
- Reinforcing



19060 - 54th Avenue  
Surrey, B.C. V3S 8E5

Tel (604) 576-1808  
info@aeconcrete.com

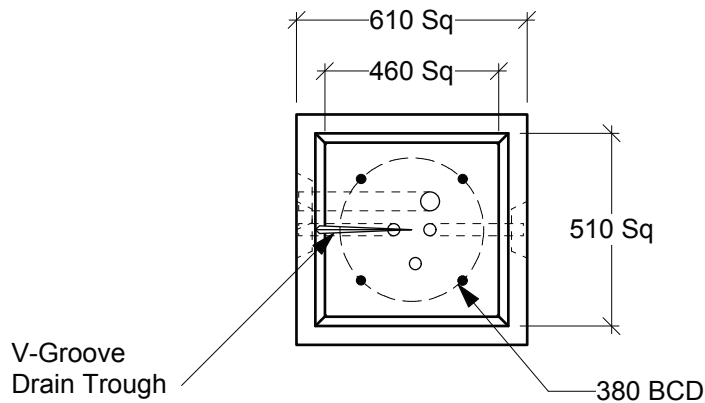
**405 x 405 x 1220 High Square Base**

Base: 1,110 lbs / 510 kgs

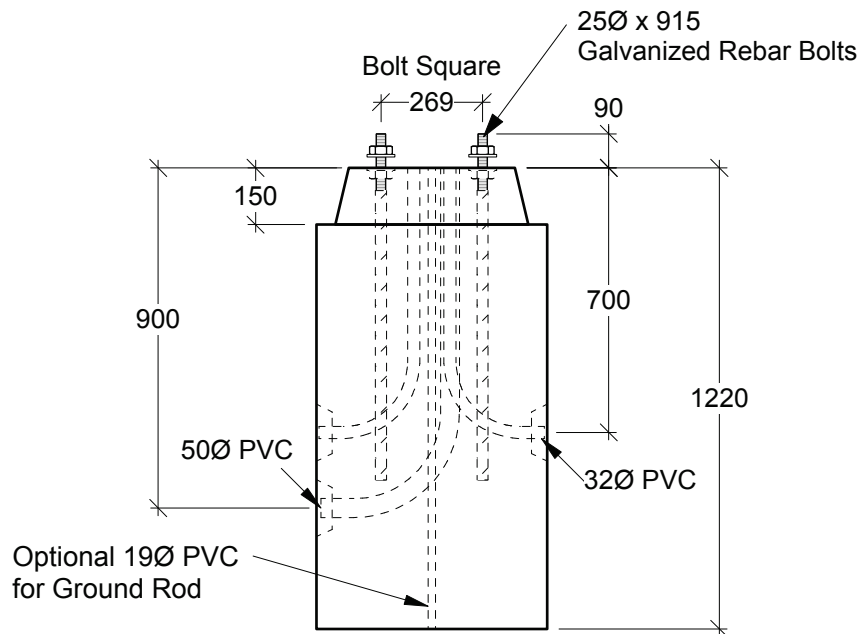
Scale: 1:20 mm

Rev: 22Jul13

Dwg#: **SS40-25-R197-3Z2Z-C**



**Plan View**



**Side View**

**General Notes:**

- Product manufactured in accordance with CSA A23.4
- Lift Points Provided (See Shop Drawing for Quantity & Locations)
- Site Installation, Backfilling, Suitability for Use and Engineering Design Approval is the responsibility of others

**Customizations Available:**

- Bolt Size & Type
- Bolt Square (325 max)
- BCD (460 max)
- Duct Size
- Duct Quantity
- Duct Orientation
- Reinforcing



19060 - 54th Avenue  
Surrey, B.C. V3S 8E5

Tel (604) 576-1808  
info@aeconcrete.com

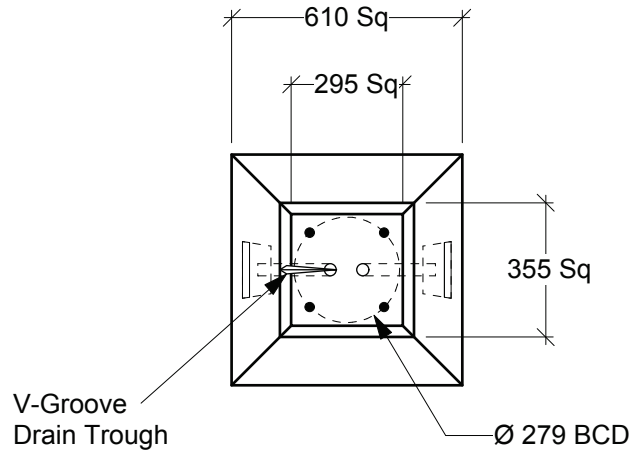
**610 x 610 x 1220 High Square Service Base**

Base: 2,420 lbs / 1,100 kgs

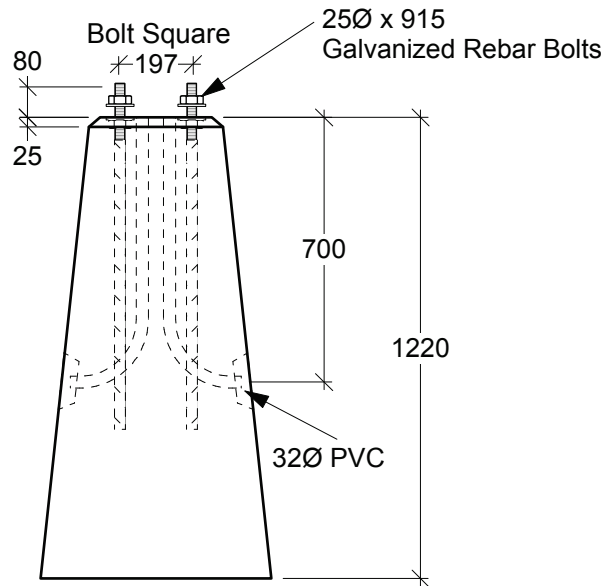
Scale: 1:20 mm

Rev: 22Jul13

Dwg#: **SS60-25-R269-SERV-C**



**Plan View**



**Side View**

**General Notes:**

- Product manufactured in accordance with CSA A23.4
- Lift Points Provided (See Shop Drawing for Quantity & Locations)
- Site Installation, Backfilling, Suitability for Use and Engineering Design Approval is the responsibility of others

**Customizations Available:**

- Bolt Size & Type
- Bolt Square (208 max)
- BCD (295 max)
- Duct Size
- Duct Quantity
- Duct Orientation
- Reinforcing



19060 - 54th Avenue  
Surrey, B.C. V3S 8E5

Tel (604) 576-1808  
info@aeconcrete.com

**Pyramid Base**

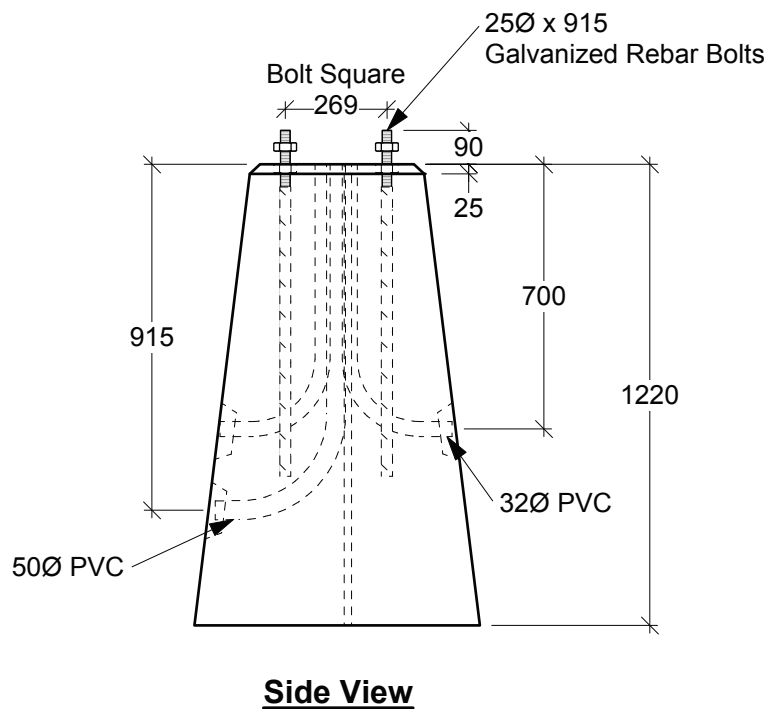
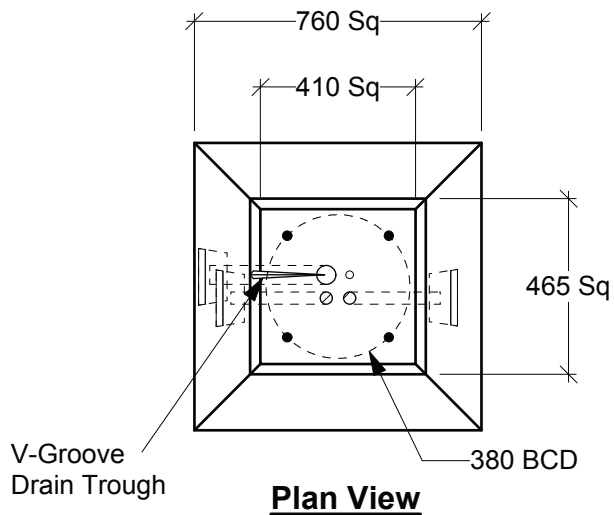
Base: 1,600 lbs / 730 kgs

Scale: 1:20 mm

Rev: 19Jul13

Dwg#: **SPC2-25-R197-3ZZZ-C**





**General Notes:**

- Product manufactured in accordance with CSA A23.4
- Lift Points Provided (See Shop Drawing for Quantity & Locations)
- Site Installation, Backfilling, Suitability for Use and Engineering Design Approval is the responsibility of others

**Customizations Available:**

- Bolt Size & Type
- Bolt Square (290 max)
- BCD (410 max)
- Duct Size
- Duct Quantity
- Duct Orientation
- Reinforcing



19060 - 54th Avenue  
Surrey, B.C. V3S 8E5

Tel (604) 576-1808  
info@aeconcrete.com

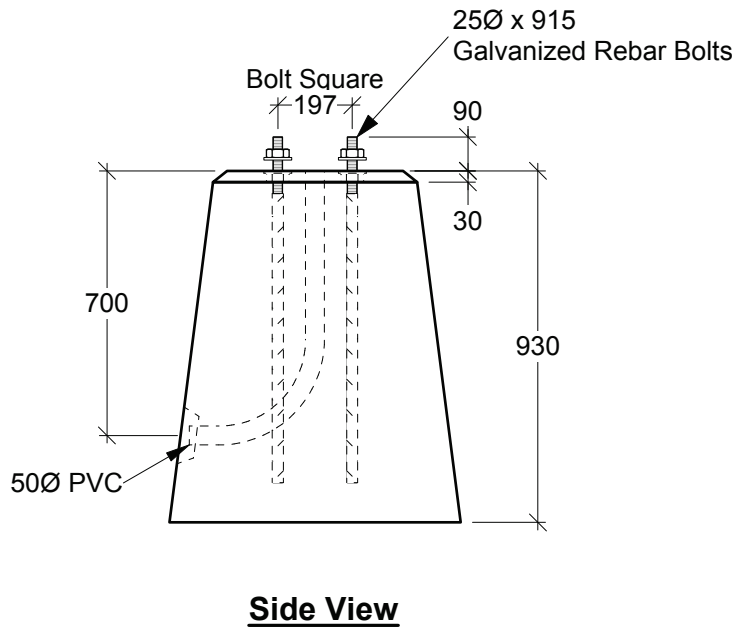
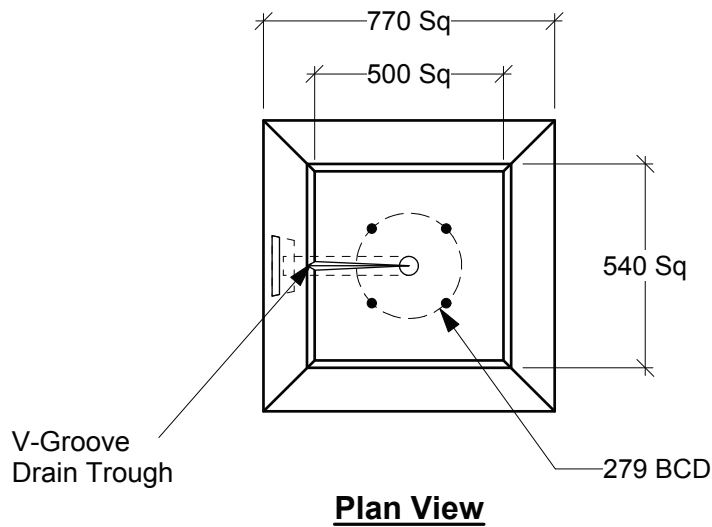
**Pyramid Service Base**

Base: 2,500 lbs / 1,140 kgs

Scale: 1:20 mm

Rev: 15Aug13

Dwg#: **SPC3-25-R269-SERV-C**



**General Notes:**

- Product manufactured in accordance with CSA A23.4
- Lift Points Provided (See Shop Drawing for Quantity & Locations)
- Site Installation, Backfilling, Suitability for Use and Engineering Design Approval is the responsibility of others

**Customizations Available:**

- Bolt Size & Type
- Bolt Square (354 max)
- BCD (500 max)
- Duct Size
- Duct Quantity
- Duct Orientation
- Reinforcing



19060 - 54th Avenue  
Surrey, B.C. V3S 8E5

Tel (604) 576-1808  
info@aeconcrete.com

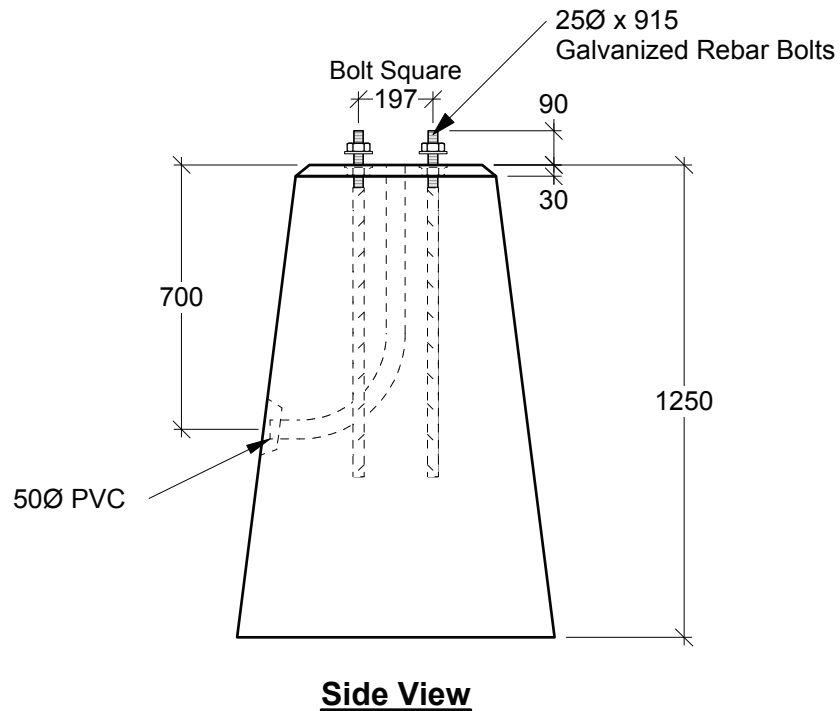
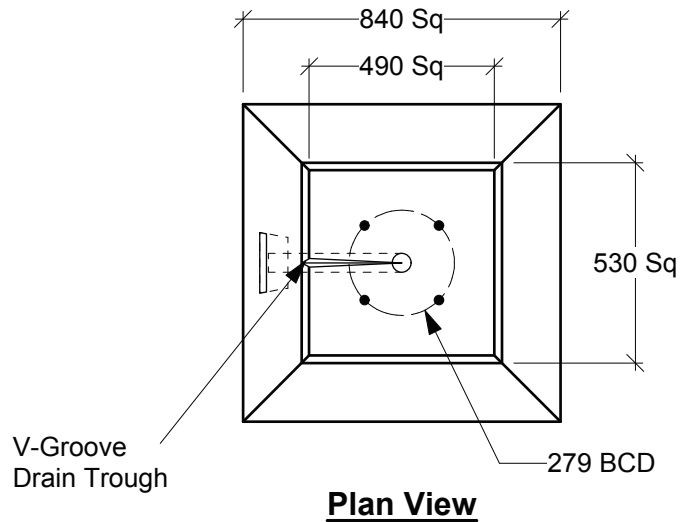
**Highway Application 1 Pyramid Base**

Base: 2,220 lbs / 1,010 kgs

Scale: 1:20 mm

Rev: 22Jul13

Dwg#: **SPA1-25-R197-5Z1Z-C**



**General Notes:**

- Product manufactured in accordance with CSA A23.4
- Lift Points Provided (See Shop Drawing for Quantity & Locations)
- Site Installation, Backfilling, Suitability for Use and Engineering Design Approval is the responsibility of others

**Customizations Available:**

- Bolt Size & Type
- Bolt Square (346 max)
- BCD (490 max)
- Duct Size
- Duct Quantity
- Duct Orientation
- Reinforcing



19060 - 54th Avenue  
Surrey, B.C. V3S 8E5

Tel (604) 576-1808  
info@aeconcrete.com

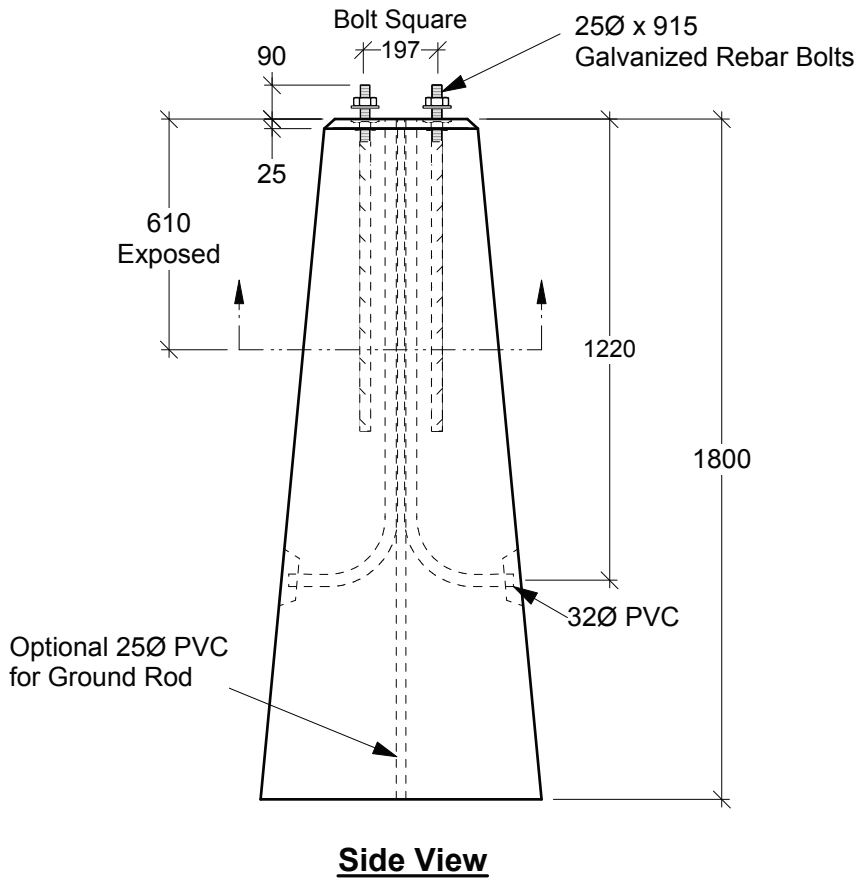
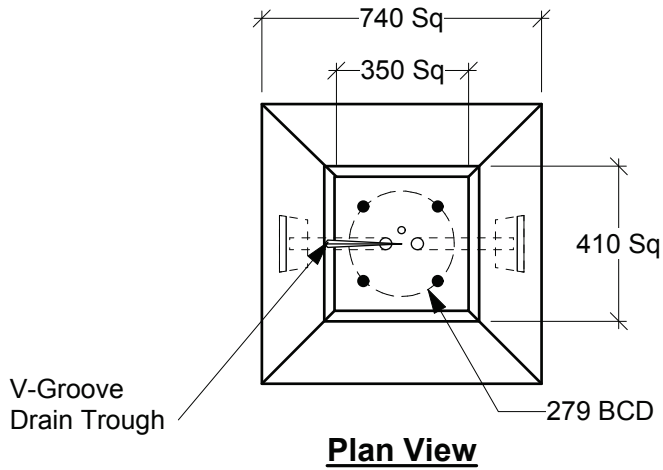
**Highway Application 3 Pyramid Base**

Base: 3,290 lbs / 1,500 kgs

Scale: 1:20 mm

Rev: 22Jul13

Dwg#: **SPA3-25-R197-5Z1Z-C**



**General Notes:**

- Product manufactured in accordance with CSA A23.4
- Lift Points Provided (See Shop Drawing for Quantity & Locations)
- Site Installation, Backfilling, Suitability for Use and Engineering Design Approval is the responsibility of others

**Customizations Available:**

- Bolt Size & Type
- Bolt Square (247 max)
- BCD (350 max)
- Duct Size
- Duct Quantity
- Duct Orientation
- Reinforcing



19060 - 54th Avenue  
Surrey, B.C. V3S 8E5

Tel (604) 576-1808  
info@aeconcrete.com

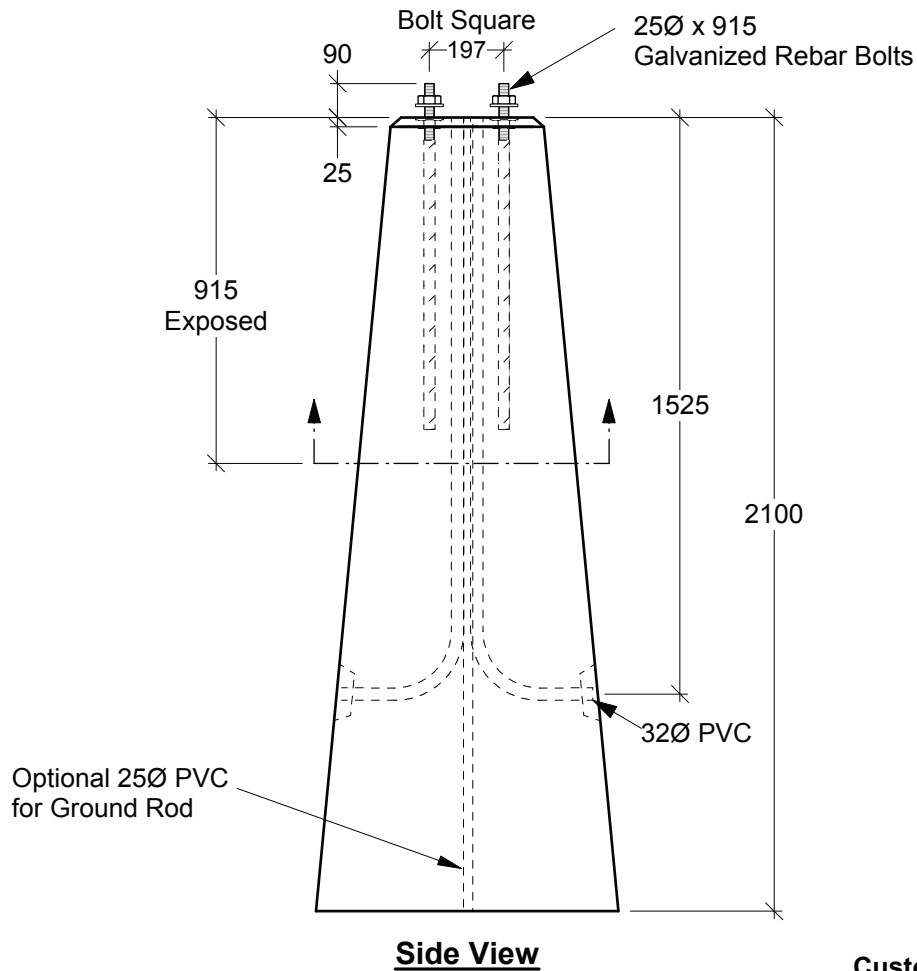
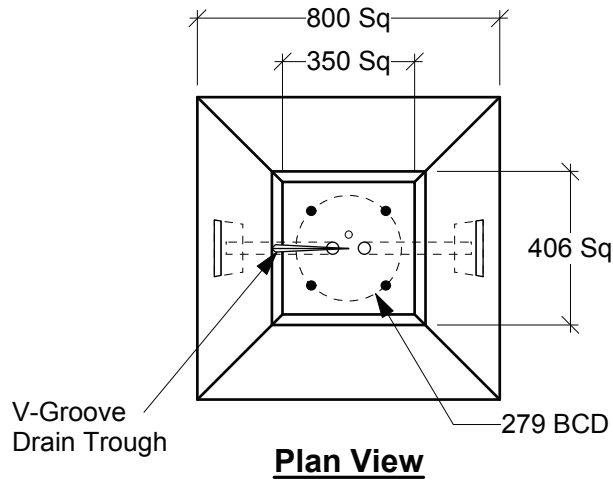
**1800 Pyramid Parking Lot Base**

Base: 3,380 lbs / 1,540 kgs

Scale: 1:20 mm

Rev: 22Jul13

Dwg#: **SP18-25-R197-3Z2Z-C**



**General Notes:**

- Product manufactured in accordance with CSA A23.4
- Lift Points Provided (See Shop Drawing for Quantity & Locations)
- Site Installation, Backfilling, Suitability for Use and Engineering Design Approval is the responsibility of others

**Customizations Available:**

- Bolt Size & Type
- Bolt Square (247 max)
- BCD (350 max)
- Duct Size
- Duct Quantity
- Duct Orientation
- Reinforcing



19060 - 54th Avenue  
Surrey, B.C. V3S 8E5

Tel (604) 576-1808  
info@aeconcrete.com

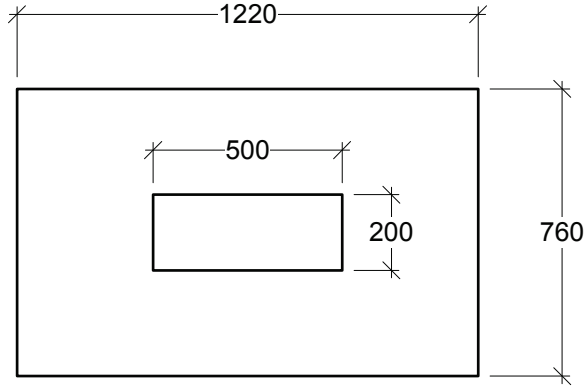
**2100 Pyramid Parking Lot Base**

Base: 4,370 lbs / 1,990 kgs

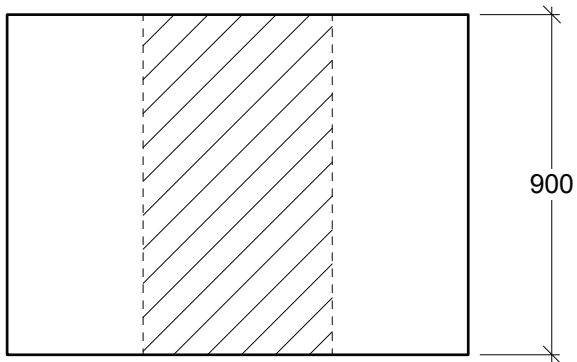
Scale: 1:20 mm

Rev: 22Jul13

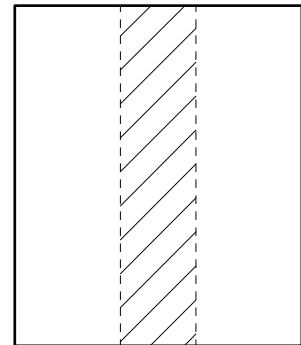
Dwg#: **SP21-25-R197-3Z2Z-C**



**Plan View**



**Side View**



**End View**

**General Notes:**

- Product manufactured in accordance with CSA A23.4
- Lift Points Provided (See Shop Drawing for Quantity & Locations)
- Site Installation, Backfilling, Suitability for Use and Engineering Design Approval is the responsibility of others



19060 - 54th Avenue  
Surrey, B.C. V3S 8E5

Tel (604) 576-1808  
info@aeconcrete.com

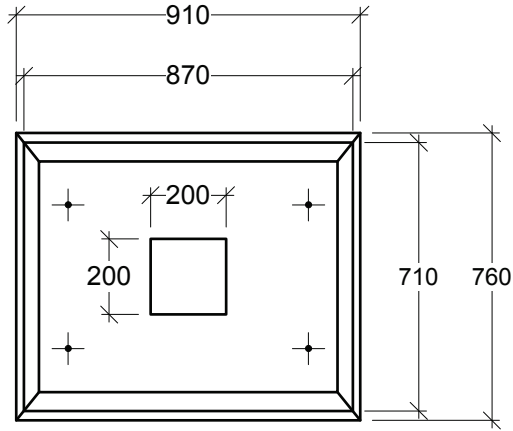
**MMCD Type P Controller Base**  
(MMCD Dwg# E1.2)

Base: 4,100 lbs / 1,860 kgs

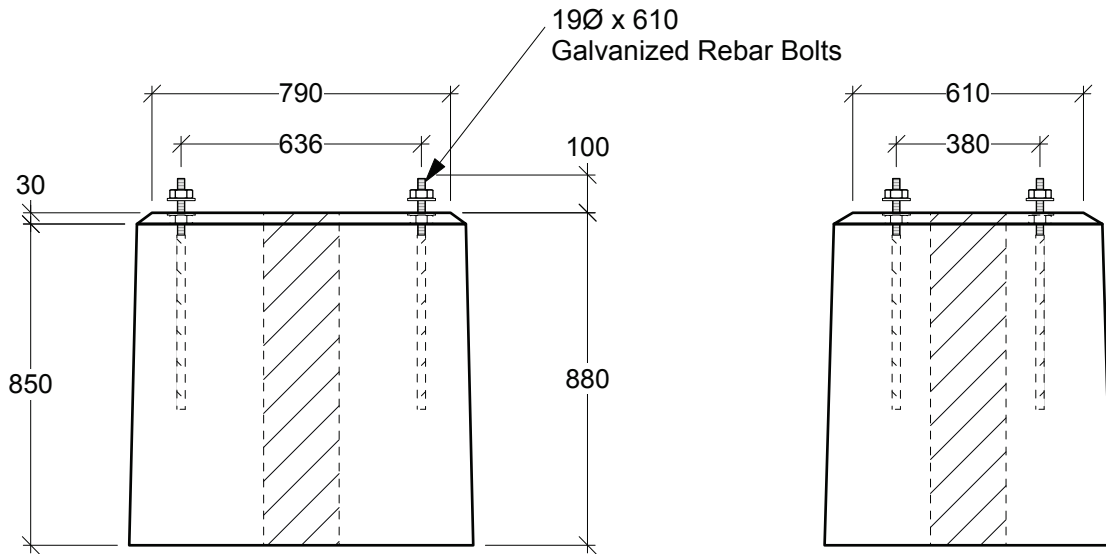
Scale: 1:20 mm

Rev: 22Jul13

Dwg#: **SLMM-33-000P-C**



**Plan View**



**Side View**

**End View**

**General Notes:**

- Product manufactured in accordance with CSA A23.4
- Lift Points Provided (See Shop Drawing for Quantity & Locations)
- Site Installation, Backfilling, Suitability for Use and Engineering Design Approval is the responsibility of others



19060 - 54th Avenue  
Surrey, B.C. V3S 8E5

Tel (604) 576-1808  
info@aeconcrete.com

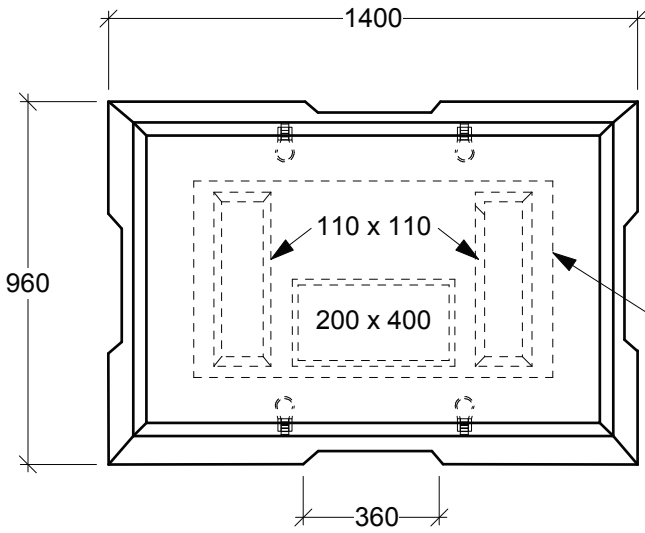
**Surrey Controller Base**

Base: 3,000 lbs / 1,370 kgs

Scale: 1:20 mm

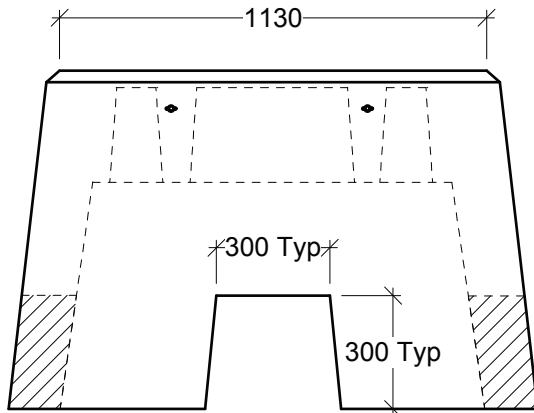
Rev: 28Jun08

Dwg#: **SLSU-33-0900-C**

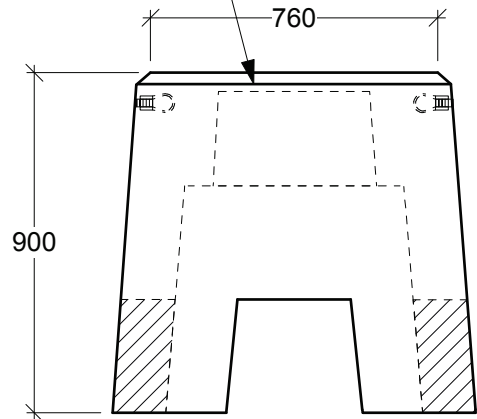


**Plan View**

Each Opening is Covered with a min 25mm Skim Coat. Knock out Skim Coat with a Hammer to get Access to Appropriate Opening.



**Side View**



**End View**

**General Notes:**

- Product manufactured in accordance with CSA A23.4
- Lift Points Provided (See Shop Drawing for Quantity & Locations)
- Site Installation, Backfilling, Suitability for Use and Engineering Design Approval is the responsibility of others



19060 - 54th Avenue  
Surrey, B.C. V3S 8E5

Tel (604) 576-1808  
info@aeconcrete.com

**MoT Controller Base (Type M & S Cabinet)**

(MoT Dwg# SP635-1.1.38)

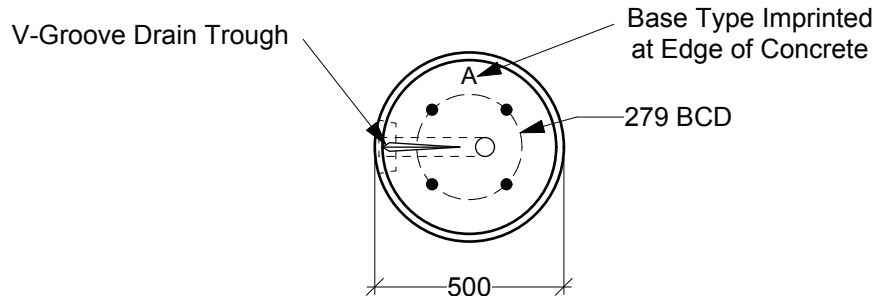
Base: 3,550 lbs / 1,620 kgs

Scale: 1:20 mm

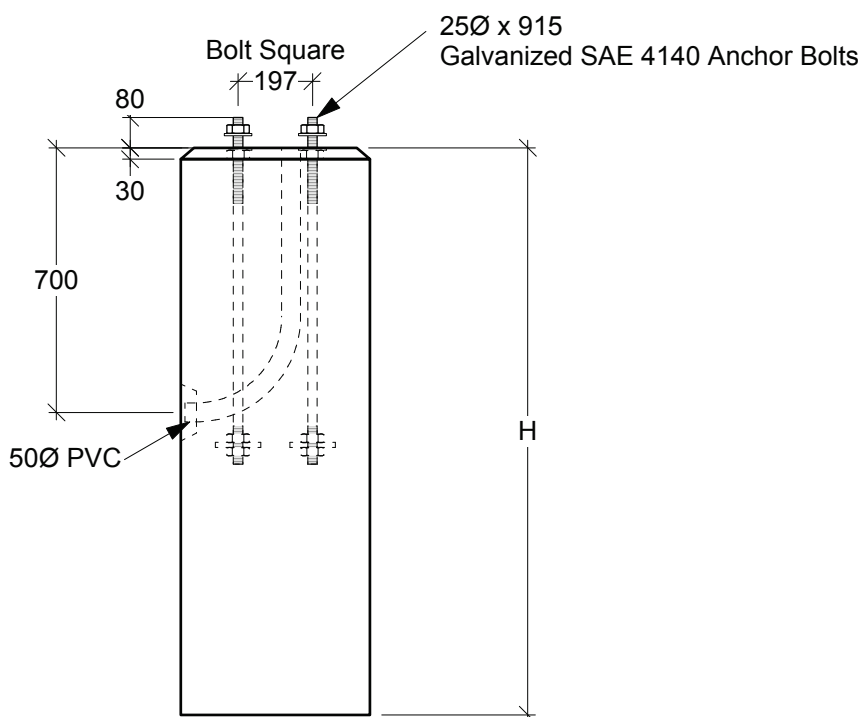
Rev: 28Jun08

Dwg#: **SLNH-33-0900-C**





**Plan View**



**Side View**

Type	Height
A	1200
B	1500

**Customizations Available:**

- Bolt Size & Type
- Bolt Square (220 max)
- BCD (310 max)
- Duct Size
- Duct Quantity
- Duct Orientation
- Reinforcing

**General Notes:**

- Product manufactured in accordance with CSA A23.4
- Lift Points Provided (See Shop Drawing for Quantity & Locations)
- Site Installation, Backfilling, Suitability for Use and Engineering Design Approval is the responsibility of others



19060 - 54th Avenue  
Surrey, B.C. V3S 8E5

Tel (604) 576-1808  
info@aeconcrete.com

**MoT & MMCD Type A & B Bases**

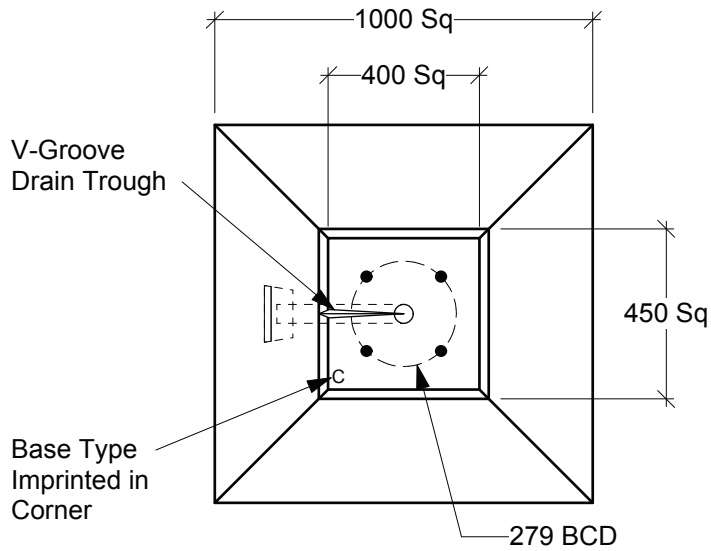
(MoTH Dwg# SP635-1.1.2, MMCD Dwg# CE1.2)

Type A: 1,310 lbs / 600 kgs  
Type B: 1,640 lbs / 750 kgs

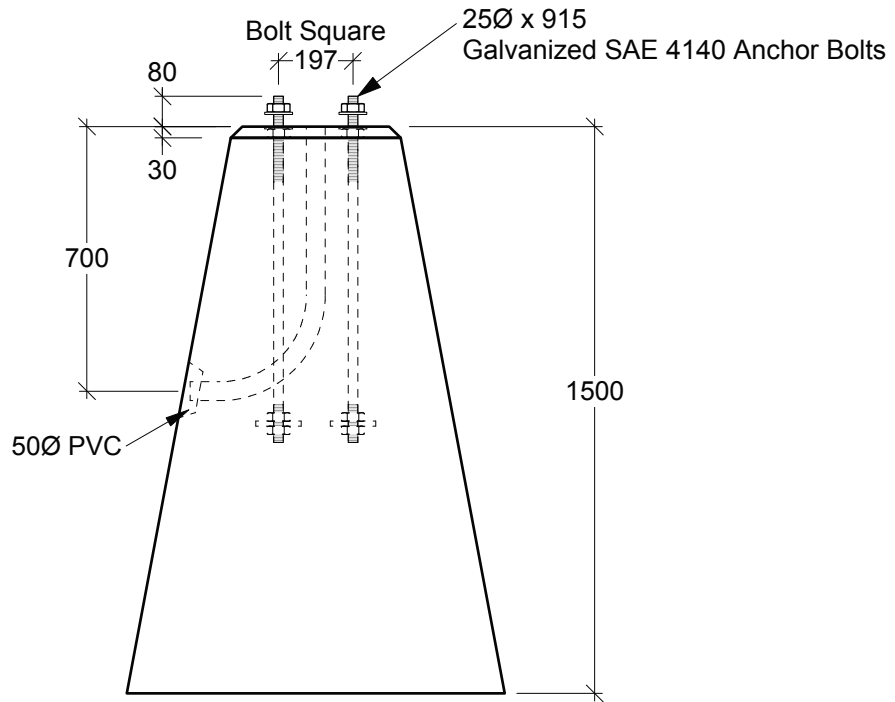
Scale: 1:20 mm

Rev: 15Aug13

Dwg#: **SRAB-25-F197-5Z1Z-C**



**Plan View**



**Side View**

**General Notes:**

- Product manufactured in accordance with CSA A23.4
- Lift Points Provided (See Shop Drawing for Quantity & Locations)
- Site Installation, Backfilling, Suitability for Use and Engineering Design Approval is the responsibility of others

**Customizations Available:**

- Bolt Size & Type
- Bolt Square (283 max)
- BCD (400 max)
- Duct Size
- Duct Quantity
- Duct Orientation
- Reinforcing



19060 - 54th Avenue  
Surrey, B.C. V3S 8E5

Tel (604) 576-1808  
info@aeconcrete.com

**MoT Type C Pyramid Base**

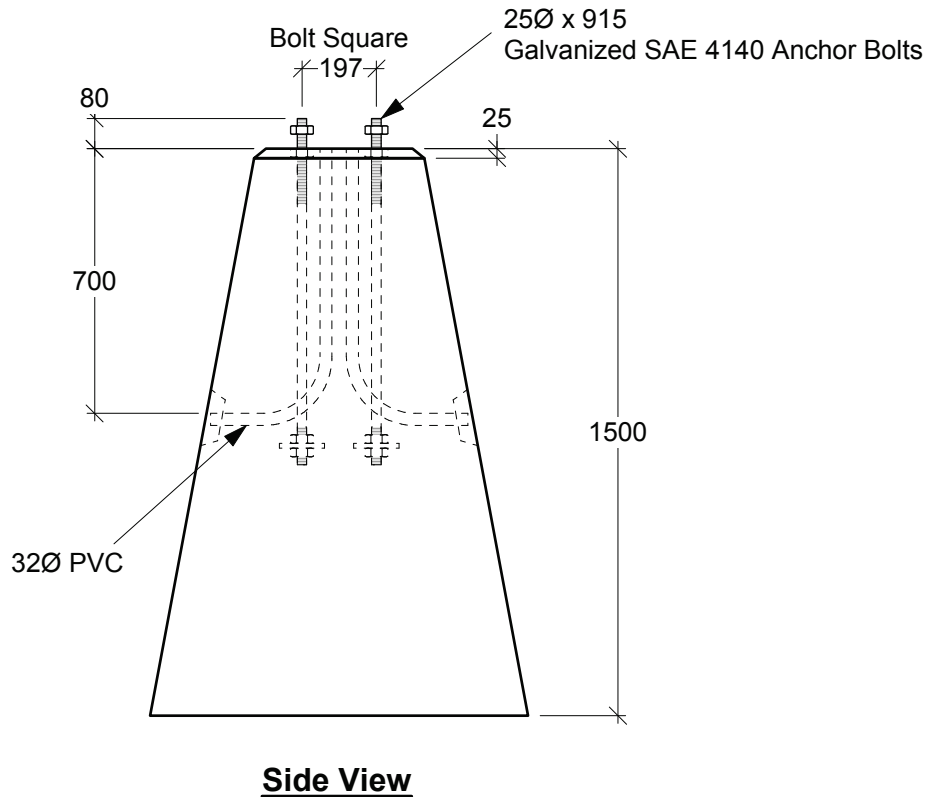
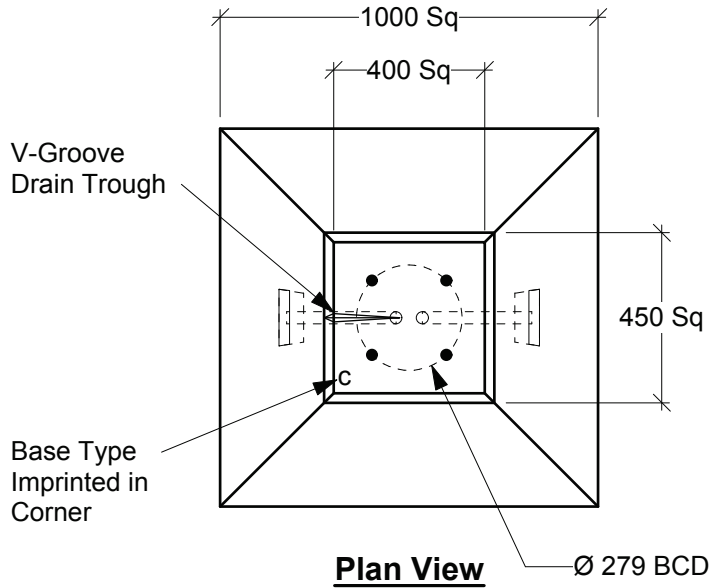
(MoTH Dwg# SP635-1.1.3)

Base: 4,540 lbs / 2,060 kgs

Scale: 1:20 mm

Rev: 03Feb09

Dwg#: **SPC0-25-F197-5Z1Z-C**



**General Notes:**

- Product manufactured in accordance with CSA A23.4
- Lift Points Provided (See Shop Drawing for Quantity & Locations)
- Site Installation, Backfilling, Suitability for Use and Engineering Design Approval is the responsibility of others

**Customizations Available:**

- Bolt Size & Type
- Bolt Square (283 max)
- BCD (400 max)
- Duct Size
- Duct Quantity
- Duct Orientation
- Reinforcing



19060 - 54th Avenue  
Surrey, B.C. V3S 8E5

Tel (604) 576-1808  
info@aeconcrete.com

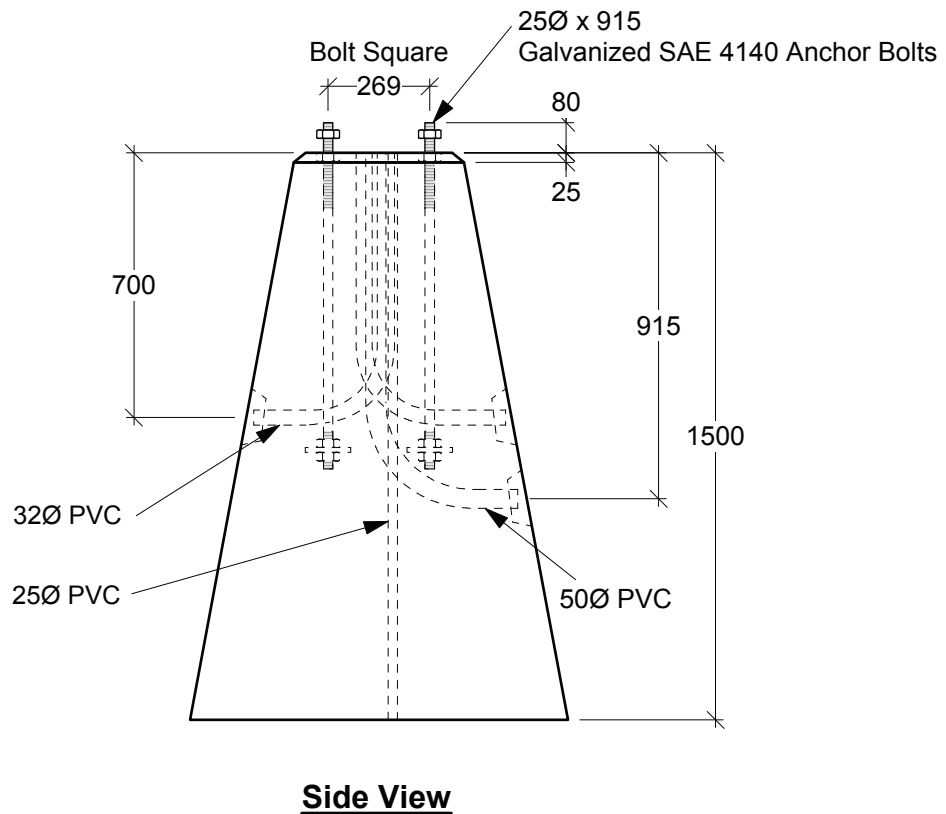
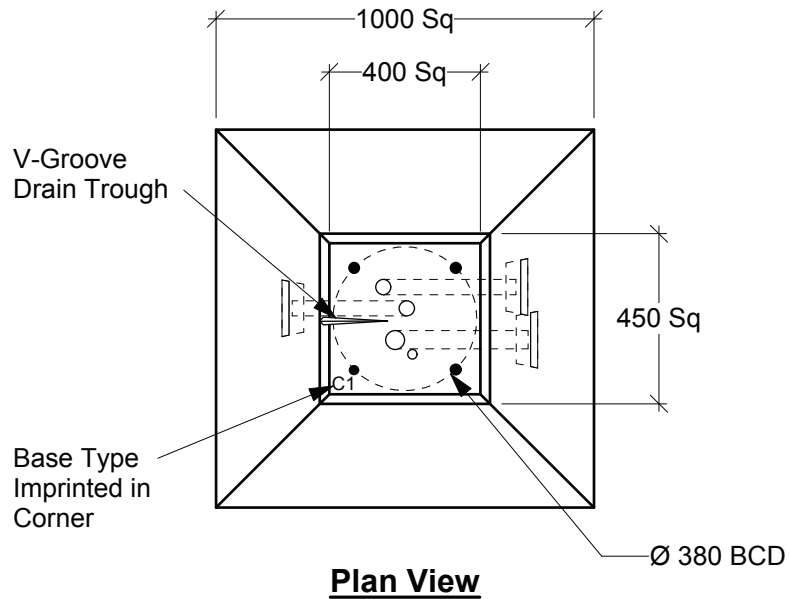
**MMCD Type C Pyramid Base**  
(MMCD Dwg# CE1.3 & CE 1.4)

Base: 4,565 lbs / 2,070 kgs

Scale: 1:20 mm

Rev: 22Jul13

Dwg#: **SPC0-25-F197-3Z2Z-C**



**General Notes:**

- Product manufactured in accordance with CSA A23.4
- Lift Points Provided (See Shop Drawing for Quantity & Locations)
- Site Installation, Backfilling, Suitability for Use and Engineering Design Approval is the responsibility of others

**Customizations Available:**

- Bolt Size & Type
- Bolt Square (283 max)
- BCD (400 max)
- Duct Size
- Duct Quantity
- Duct Orientation
- Reinforcing



19060 - 54th Avenue  
Surrey, B.C. V3S 8E5

Tel (604) 576-1808  
info@aeconcrete.com

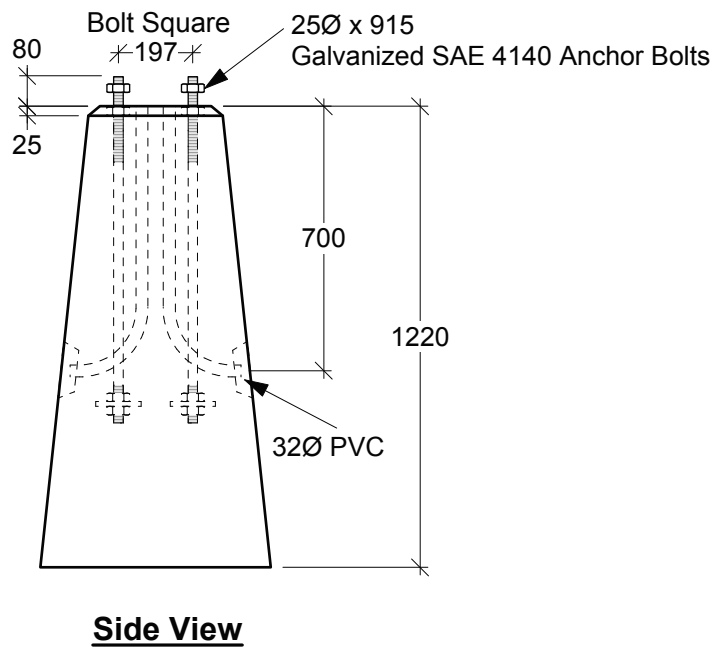
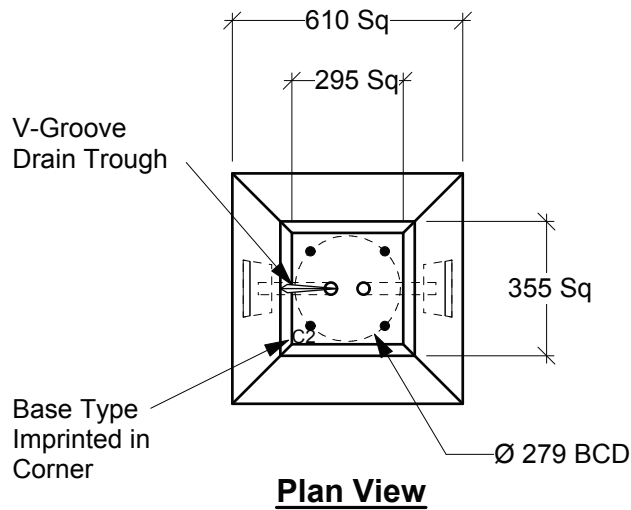
**MMCD Type C1 Service Base**  
(MMCD Dwg# CE1.3 & CE 1.4)

Base: 4,550 lbs / 2,070 kgs

Scale: 1:20 mm

Rev: 22Jul13

Dwg#: **SPC1-25-F269-SERV-C**



**General Notes:**

- Product manufactured in accordance with CSA A23.4
- Lift Points Provided (See Shop Drawing for Quantity & Locations)
- Site Installation, Backfilling, Suitability for Use and Engineering Design Approval is the responsibility of others

**Customizations Available:**

- Bolt Size & Type
- Bolt Square (209 max)
- BCD (295 max)
- Duct Size
- Duct Quantity
- Duct Orientation
- Reinforcing



19060 - 54th Avenue  
Surrey, B.C. V3S 8E5

Tel (604) 576-1808  
info@aeconcrete.com

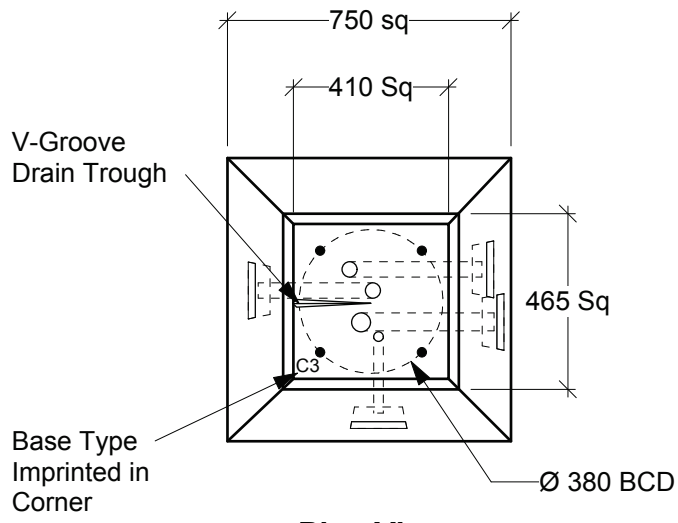
**MMCD Type C2 Base**  
(MMCD Dwg # CE1.3)

Base: 1,600 lbs / 730 kgs

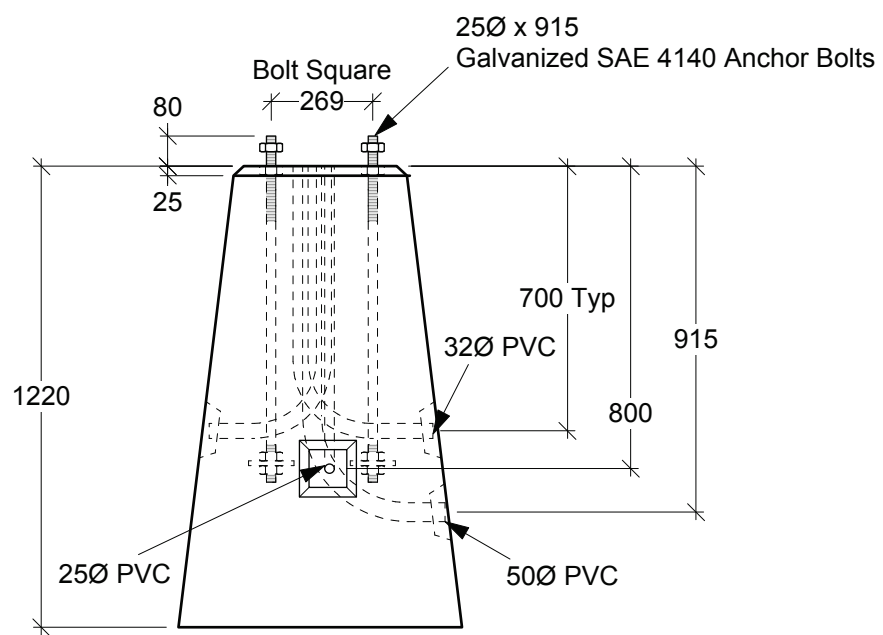
Scale: 1:20 mm

Rev: 22Jul13

Dwg#: **SPC2-25-F197-3Z2Z-C**



**Plan View**



**Side View**

**General Notes:**

- Product manufactured in accordance with CSA A23.4
- Lift Points Provided (See Shop Drawing for Quantity & Locations)
- Site Installation, Backfilling, Suitability for Use and Engineering Design Approval is the responsibility of others

**Customizations Available:**

- Bolt Size & Type
- Bolt Square (290 max)
- BCD (410 max)
- Duct Size
- Duct Quantity
- Duct Orientation
- Reinforcing



19060 - 54th Avenue  
Surrey, B.C. V3S 8E5  
Tel (604) 576-1808  
info@aeconcrete.com

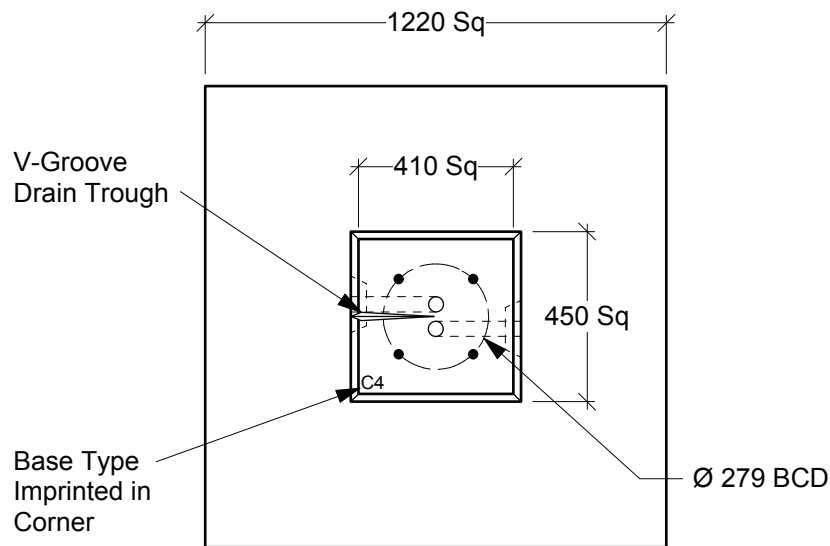
**MMCD Type C3 Service Base**  
(MMCD Dwg# CE1.3)

Base: 2,500 lbs / 1,140 kgs

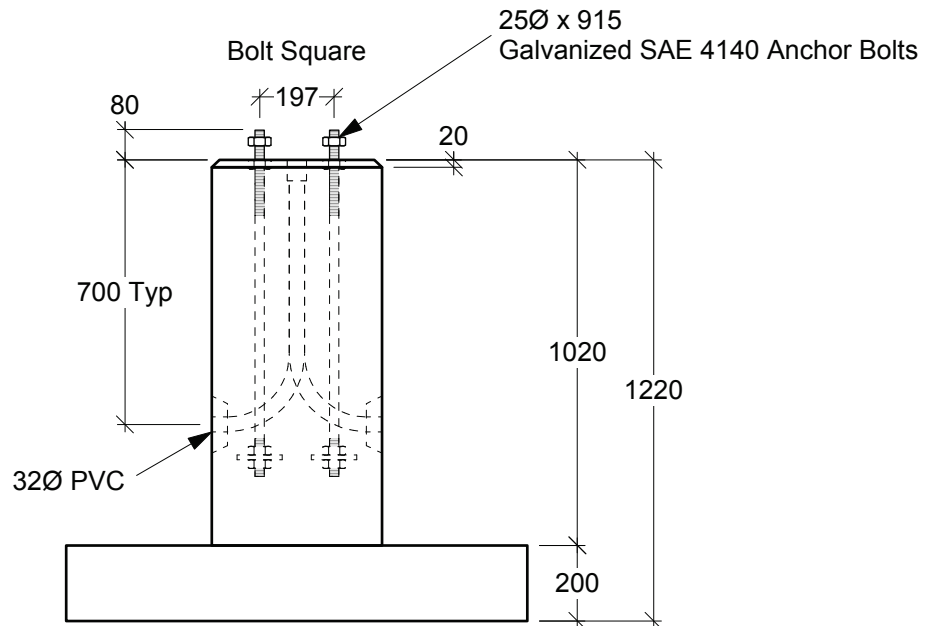
Scale: 1:20 mm

Rev: 22Jul13

Dwg#: **SPC3-25-F269-SERV-C**



**Plan View**



**Side View**

**General Notes:**

- Product manufactured in accordance with CSA A23.4
- Lift Points Provided (See Shop Drawing for Quantity & Locations)
- Site Installation, Backfilling, Suitability for Use and Engineering Design Approval is the responsibility of others

**Customizations Available:**

- Bolt Size & Type
- Bolt Square (290 max)
- BCD (410 max)
- Duct Size
- Duct Quantity
- Duct Orientation
- Reinforcing



19060 - 54th Avenue  
Surrey, B.C. V3S 8E5

Tel (604) 576-1808  
info@aeconcrete.com

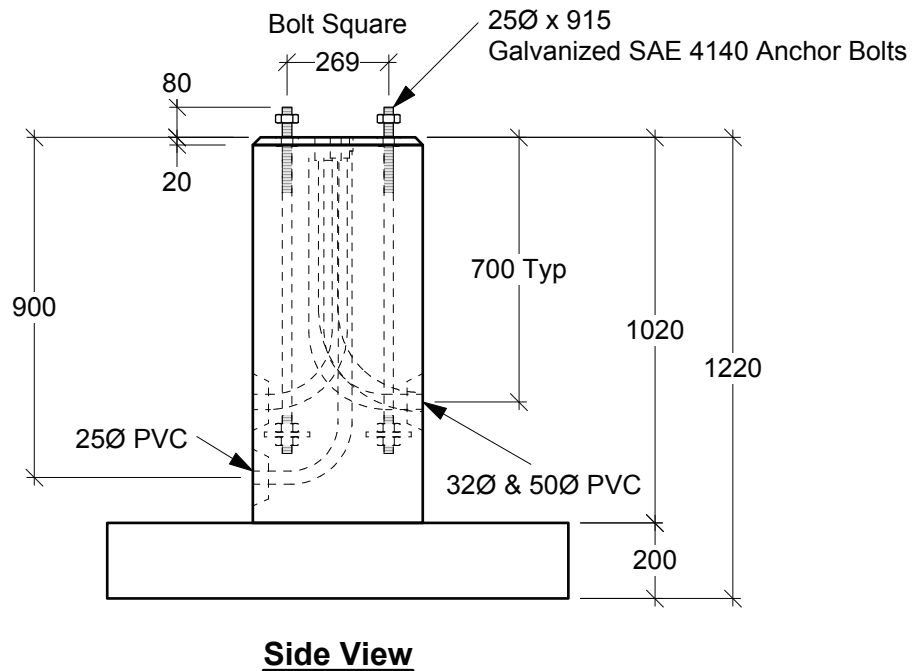
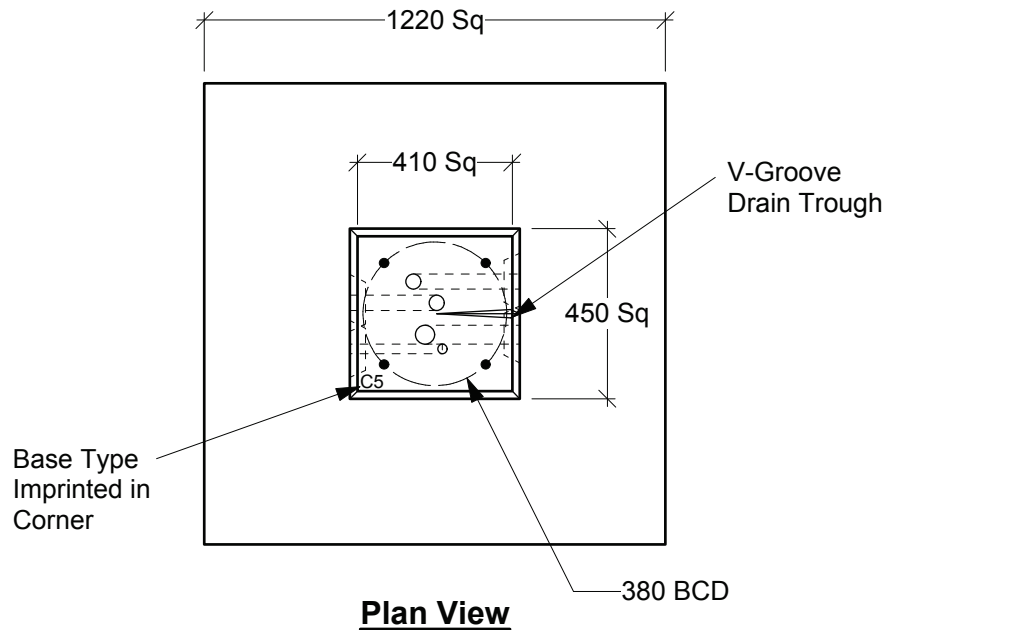
**MMCD Type C4 Base**  
(MMCD Dwg # CE1.5)

Base: 2,670 lbs / 1,210 kgs

Scale: 1:20 mm

Rev: 22Jul13

Dwg#: **SFC4-25-F197-3Z2Z-C**



**General Notes:**

- Product manufactured in accordance with CSA A23.4
- Lift Points Provided (See Shop Drawing for Quantity & Locations)
- Site Installation, Backfilling, Suitability for Use and Engineering Design Approval is the responsibility of others

**Customizations Available:**

- Bolt Size & Type
- Bolt Square (290 max)
- BCD (410 max)
- Duct Size
- Duct Quantity
- Duct Orientation
- Reinforcing



19060 - 54th Avenue  
Surrey, B.C. V3S 8E5

Tel (604) 576-1808  
info@aeconcrete.com

**MMCD Type C5 Service Base**  
(MMCD Dwg# CE1.5)

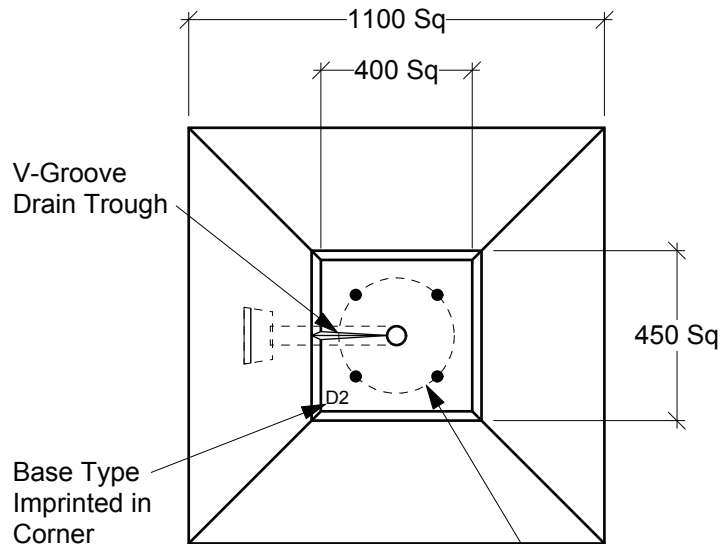
Base: 2,670 lbs / 1,210 kgs

Scale: 1:20 mm

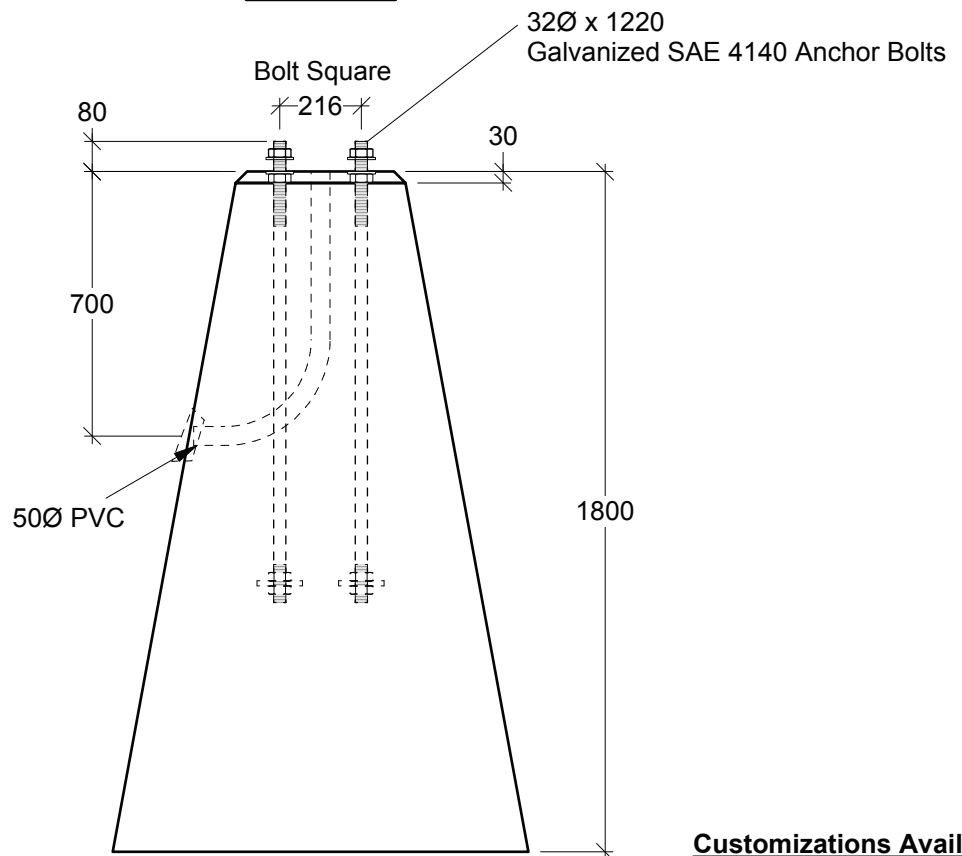
Rev: 22Jul13

Dwg#: **SFC5-25-F269-3Z2Z-C**





**Plan View**



**Side View**

**Customizations Available:**

- Bolt Size & Type
- Bolt Square (283 max)
- BCD (400 max)
- Duct Size
- Duct Quantity
- Duct Orientation
- Reinforcing

**General Notes:**

- Product manufactured in accordance with CSA A23.4
- Lift Points Provided (See Shop Drawing for Quantity & Locations)
- Site Installation, Backfilling, Suitability for Use and Engineering Design Approval is the responsibility of others



19060 - 54th Avenue  
Surrey, B.C. V3S 8E5

Tel (604) 576-1808  
info@aeconcrete.com

**MoT Type D2 Pyramid Base**

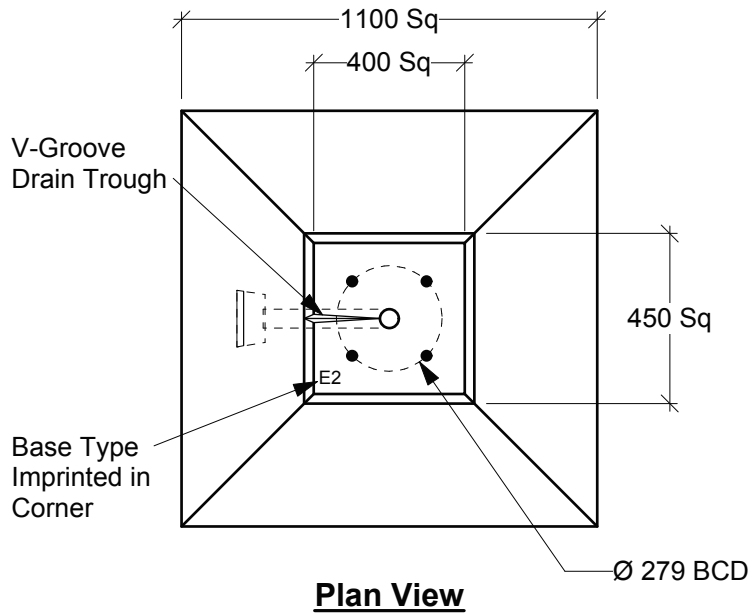
(MoTH Dwg# SP635-1.1.7)

Base: 6,300 lbs / 2,860 kgs

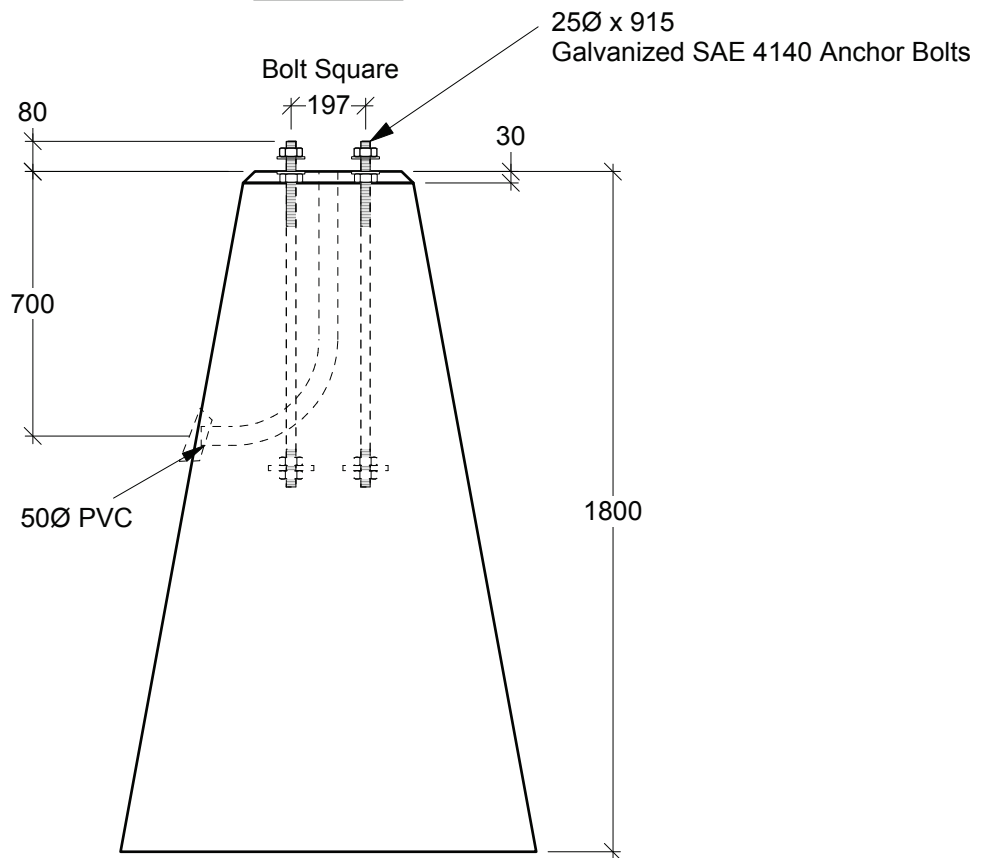
Scale: 1:20 mm

Rev: 22Jul13

Dwg#: **SPD2-32-F216-5Z1Z-C**



**Plan View**



**Side View**

**General Notes:**

- Product manufactured in accordance with CSA A23.4
- Lift Points Provided (See Shop Drawing for Quantity & Locations)
- Site Installation, Backfilling, Suitability for Use and Engineering Design Approval is the responsibility of others

**Customizations Available:**

- Bolt Size & Type
- Bolt Square (283 max)
- BCD (400 max)
- Duct Size
- Duct Quantity
- Duct Orientation
- Reinforcing



19060 - 54th Avenue  
Surrey, B.C. V3S 8E5

Tel (604) 576-1808  
info@aeconcrete.com

**MoT & MMCD Type E2 Pyramid Base**

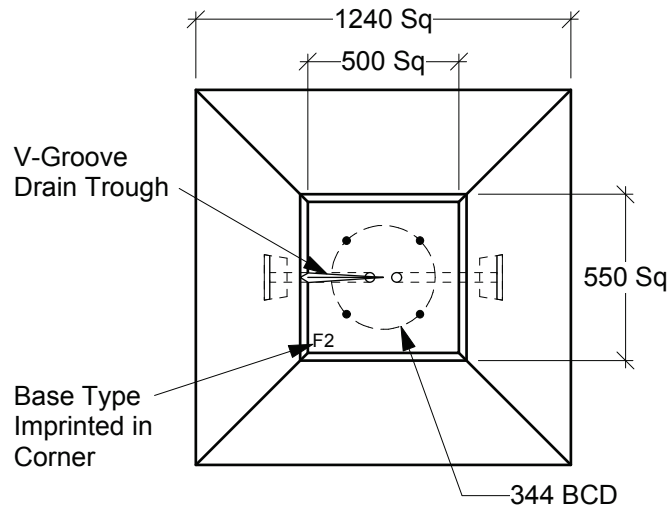
(MoTH Dwg# SP635-1.1.7, MMCD Dwg# CE1.8)

Base: 6,300 lbs / 2,860 kgs

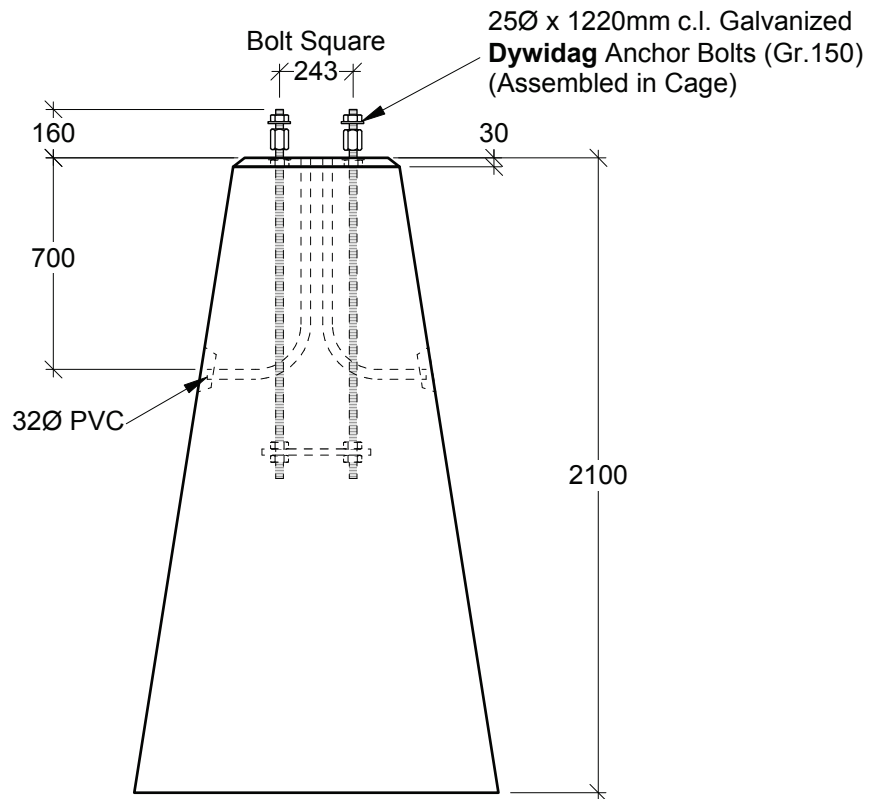
Scale: 1:20 mm

Rev: 22Jul13

Dwg#: **SPE2-25-F197-5Z1Z-C**



**Plan View**



**Elevation**

**Customizations Available:**

- Bolt Size & Type
- Bolt Square (354 max)
- BCD (500 max)
- Duct Size
- Duct Quantity
- Duct Orientation
- Reinforcing

**General Notes:**

- Product manufactured in accordance with CSA A23.4
- Lift Points Provided (See Shop Drawing for Quantity & Locations)
- Site Installation, Backfilling, Suitability for Use and Engineering Design Approval is the responsibility of others



19060 - 54th Avenue  
Surrey, B.C. V3S 8E5

Tel (604) 576-1808  
info@aeconcrete.com

**MoT & MMCD Type F2 & S2 Pyramid Bases**

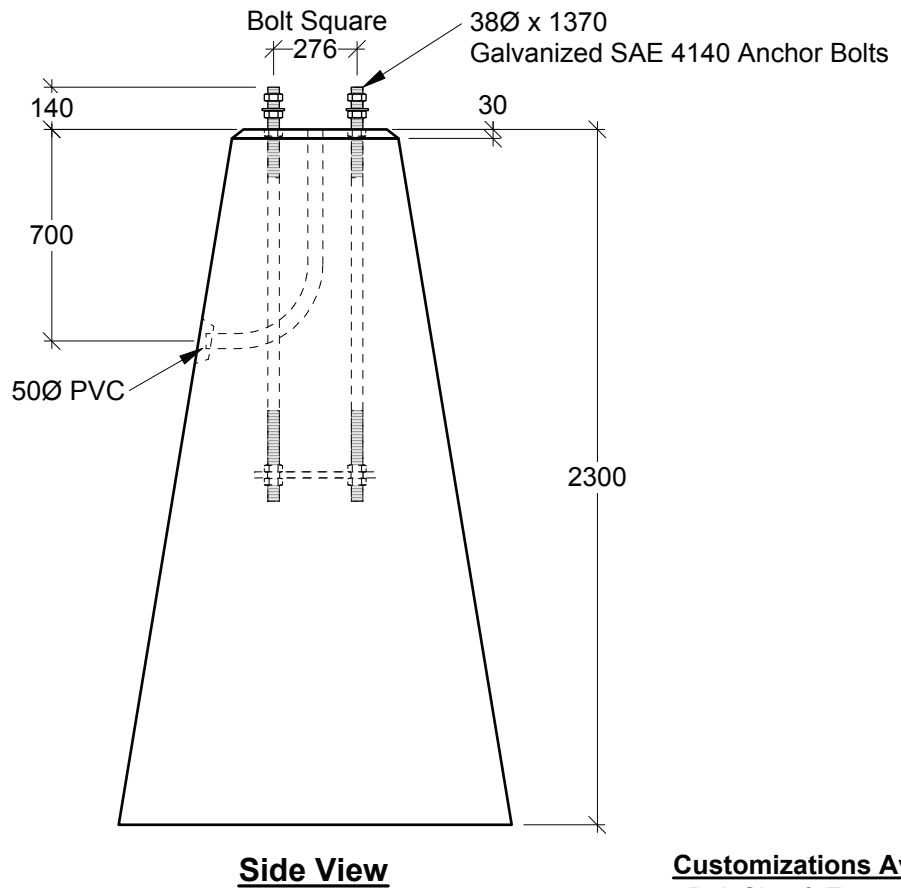
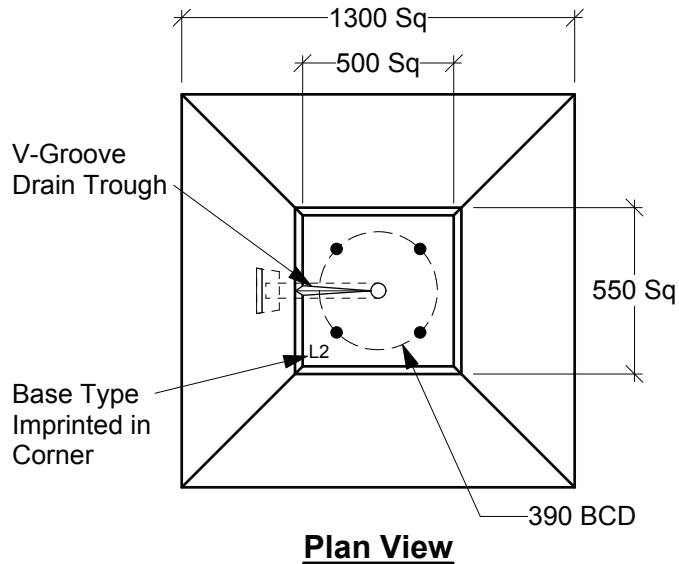
(MoTH Dwg# SP635-1.1.14, MMCD Dwg# CE1.13 )

Base: 9,740 lbs / 4,420 kgs

Scale: 1:25 mm

Rev: 22Jul13

Dwg#: **SPSF-25-D243-3ZZZ-C**



**Customizations Available:**

- Bolt Size & Type
- Bolt Square (354 max)
- BCD (500 max)
- Duct Size
- Duct Quantity
- Duct Orientation
- Reinforcing

**General Notes:**

- Product manufactured in accordance with CSA A23.4
- Lift Points Provided (See Shop Drawing for Quantity & Locations)
- Site Installation, Backfilling, Suitability for Use and Engineering Design Approval is the responsibility of others



19060 - 54th Avenue  
Surrey, B.C. V3S 8E5

Tel (604) 576-1808  
info@aeconcrete.com

**MoT & MMCD Type L2 Pyramid Base**

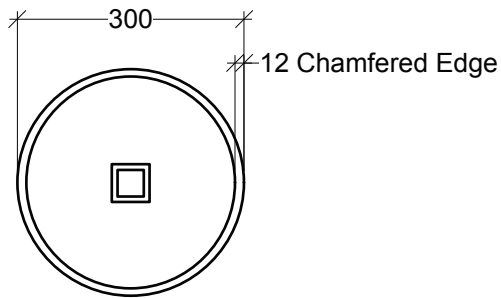
(MoTH Dwg# SP635-1.1.14, MMCD Dwg# E1.13)

Base: 11,450 lbs / 5,200 kgs

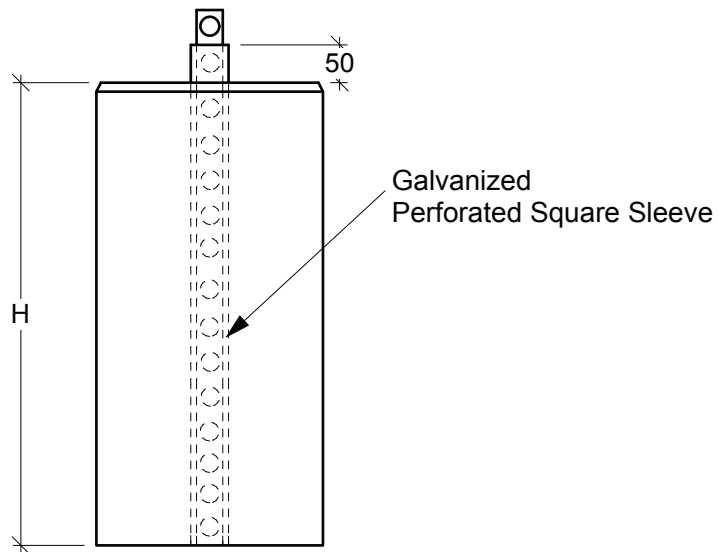
Scale: 1:25 mm

Rev: 11Jun15

Dwg#: **SPL2-38-F276-5Z1Z-C**



**Plan View**



**Side View**

Type	Height	Application
1	600	Single Post Signs in Paved Islands or Concrete Sidewalks
2	800	Single or Two Post Signs in Gravel Shoulder

SLEEVE SCHEDULE		
Post O.D.	Inner Sleeve	Sleeve Size in Concrete
38 (1-1/2")	Yes	51 (2")
45 (1-3/4")	Yes	57 (2-1/4")
51 (2")	Yes	57 (2-1/4")
57 (2-1/4")	No	64 (2-1/2")

**General Notes:**

- Product manufactured in accordance with CSA A23.4
- Lift Points Provided (See Shop Drawing for Quantity & Locations)
- Site Installation, Backfilling, Suitability for Use and Engineering Design Approval is the responsibility of others



19060 - 54th Avenue  
Surrey, B.C. V3S 8E5

Tel (604) 576-1808  
info@aeconcrete.com

**MoT Sign Post Base Types 1 & 2**

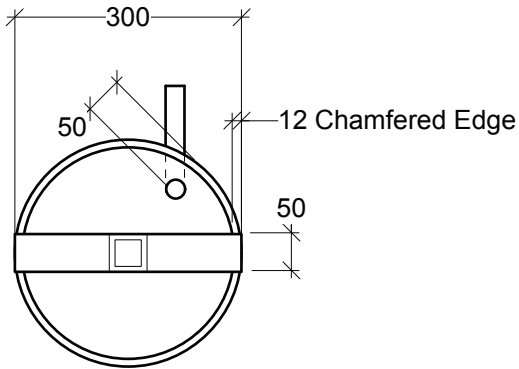
(MoTH Dwg# SP635-1.1.35)

Type 1: 240 lbs / 110 kgs  
Type 2: 320 lbs / 150 kgs

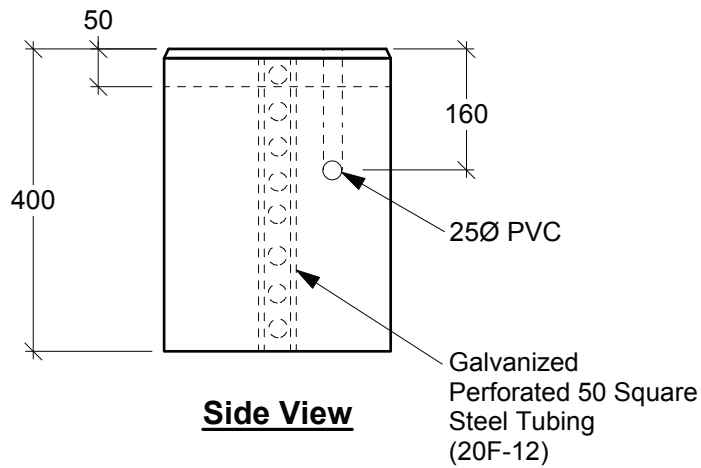
Scale: 1:10 mm

Rev: 15Aug13

Dwg#: **SRT1-25-F197-PZ1Z-C**



**Plan View**



**Side View**

**General Notes:**

- Product manufactured in accordance with CSA A23.4
- Lift Points Provided (See Shop Drawing for Quantity & Locations)
- Site Installation, Backfilling, Suitability for Use and Engineering Design Approval is the responsibility of others



19060 - 54th Avenue  
Surrey, B.C. V3S 8E5

Tel (604) 576-1808  
info@aeconcrete.com

**MoT & MMCD Post Mounted Flasher Base**

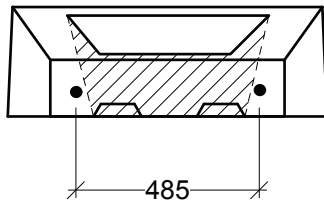
(MoTH Dwg# SP635-1.1.37, MMCD Dwg# E1.18)

Base: 160 lbs / 80 kgs

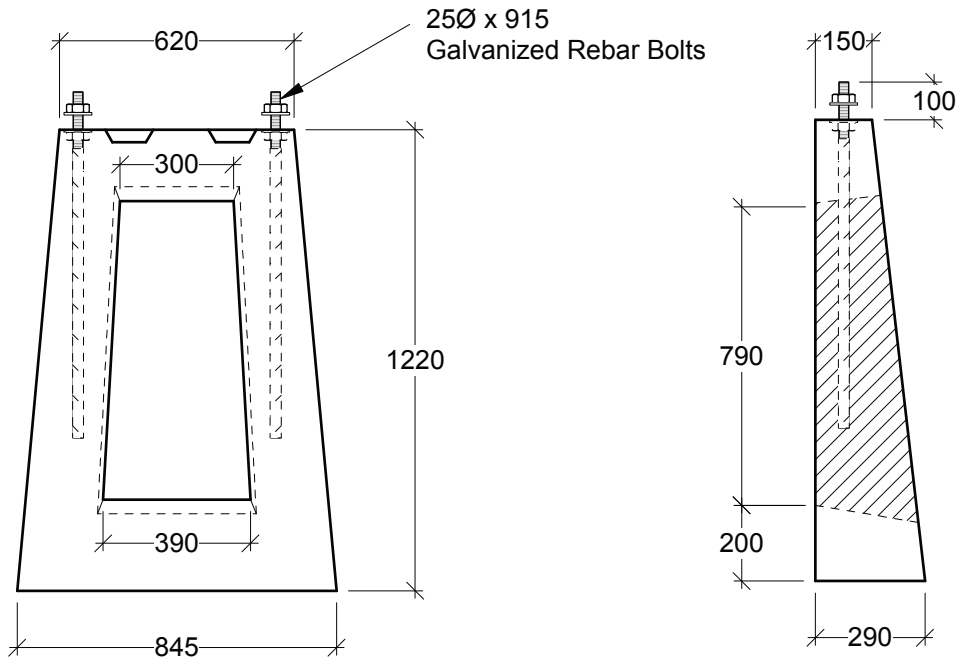
Scale: 1:10 mm

Rev: 28Jun13

Dwg#: **SLFL-30-0400-C**



**Plan View**



**Side View**

**End View**

**General Notes:**

- Product manufactured in accordance with CSA A23.4
- Lift Points Provided (See Shop Drawing for Quantity & Locations)
- Site Installation, Backfilling, Suitability for Use and Engineering Design Approval is the responsibility of others



19060 - 54th Avenue  
Surrey, B.C. V3S 8E5

Tel (604) 576-1808  
info@aeconcrete.com

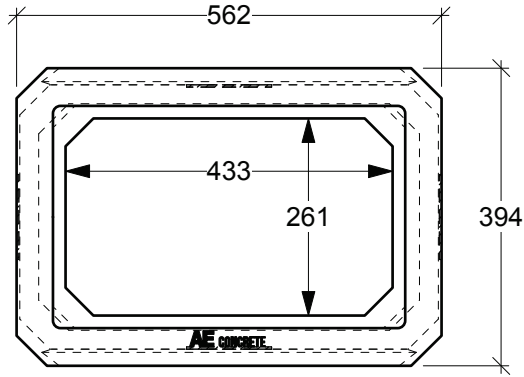
**CP Rail Base**

Base: 470 lbs / 220 kgs

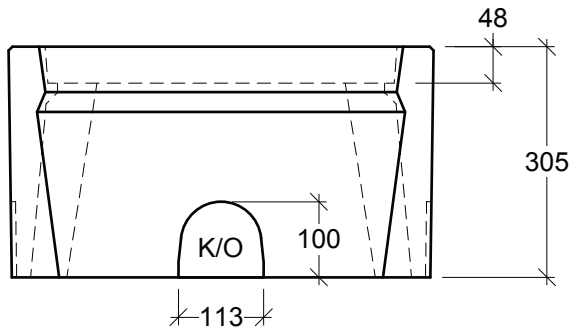
Scale: 1:20 mm

Rev: 28Jun13

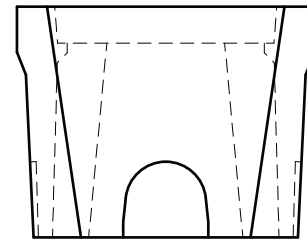
Dwg#: **SLCP-30-0450-C**



**Plan View**



**Side View**



**End View**

**General Notes:**

- Products manufactured in accordance with CSA A23.4
- Designed for Boulevard (Off-Road) Use - H-20 Static Loading
- Site Installation, Backfilling & Suitability for Use is the responsibility of others



19060 - 54th Avenue  
Surrey, B.C. V3S 8E5

Tel (604) 576-1808  
info@aeconcrete.com

**B937 Top / Extension 305 High**

(#37 & B-9 1/2)

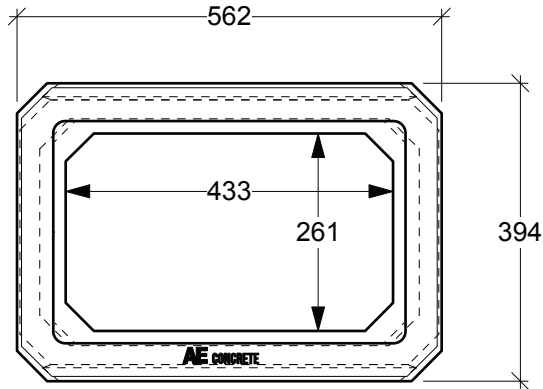
Top/Ext: 105 lbs / 50 kgs

Scale: 1:10 mm

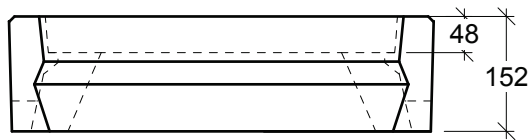
Rev: 28Jun08

Dwg#: **B937-00-0305-C**

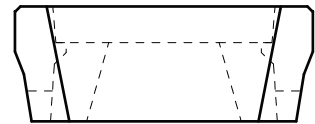




**Plan View**



**Side View**



**End View**

**General Notes:**

- Products manufactured in accordance with CSA A23.4
- Designed for Boulevard (Off-Road) Use - H-20 Static Loading
- Site Installation, Backfilling & Suitability for Use is the responsibility of others



19060 - 54th Avenue  
Surrey, B.C. V3S 8E5

Tel (604) 576-1808  
info@aeconcrete.com

**B937 Top / Extension 152 High**

(#37 & B-9 1/2)

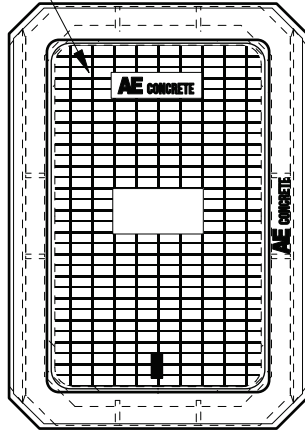
Top/Ext: 60 lbs / 27 kgs

Scale: 1:10 mm

Rev: 28Jun08

Dwg#: **B937-00-0150-C**

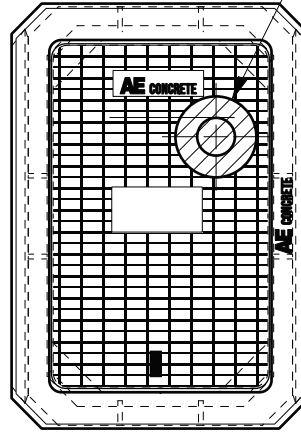
Ground Hole Location on Underside



**Cast Iron Cover**

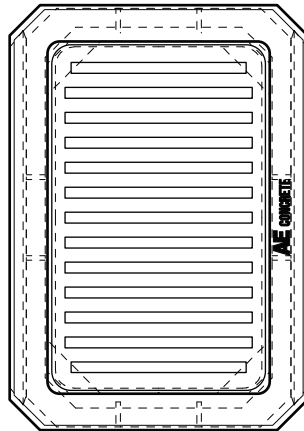
- Available plain or marked. Markings: Sewer, Electric Power or Water Meter.

**Option:**  
Remote Reader Recess or Straight Thru Hole

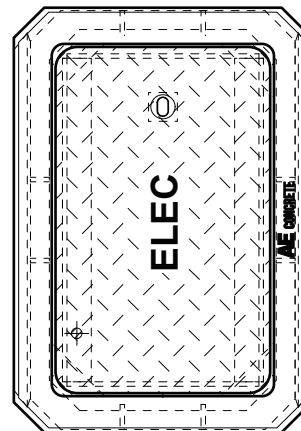


**Cast Iron Cover c/w Hole for Remote Reader**

- Available plain or marked as Water Meter.



**Cast Iron Grate**



**Steel Checker Plate Cover**

Painted Black, Boltdown, Steel Checker Plate Lid  
**Options:** Galvanizing, Padlock Recess  
 Remote Reader Holes  
 Weld Marking e.g. "ELEC"

**General Notes:**

- Products manufactured in accordance with CSA A23.4
- Designed for Boulevard (Off-Road) Use - H-20 Static Loading
- Steel Products manufactured under CSA W47.1 in accordance to CSA W59
- Site Installation, Backfilling & Suitability for Use is the responsibility of others



19060 - 54th Avenue  
 Surrey, B.C. V3S 8E5

Tel (604) 576-1808  
 info@aeconcrete.com

**B937 Cast Iron & Steel Covers**

Cast Iron: 27 lbs / 12 kgs  
 Steel Checker Plate: 30 lbs / 14 kgs

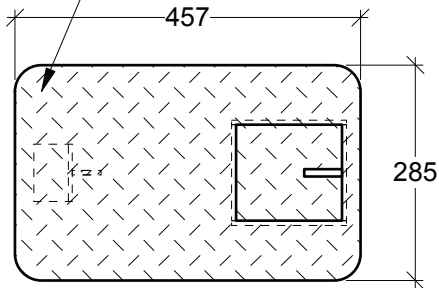
Scale: 1:10 mm

Rev: 28Jun08

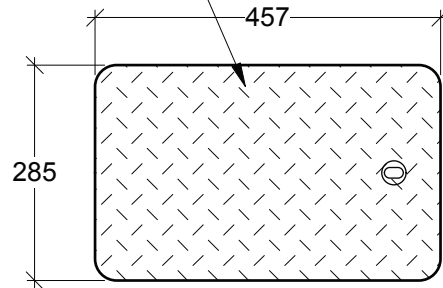
Dwg#: **B937-ZZ-LIDS-C**

Painted Black, Bolt-down, Steel Checker Plate Lids

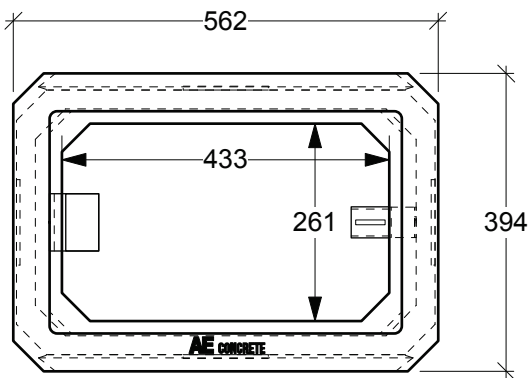
**Options:** Galvanizing, Padlock Recess  
Remote Reader Holes  
Weld Marking e.g. "ELEC"



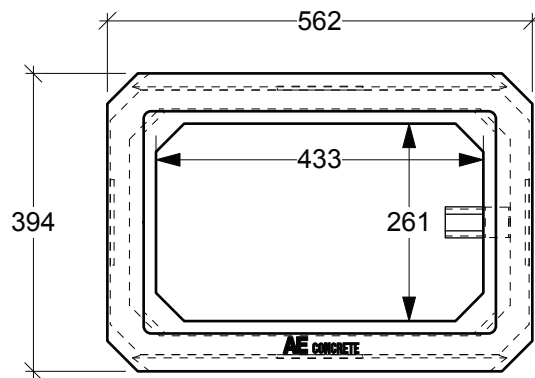
**Plan View**  
**Steel Lid**



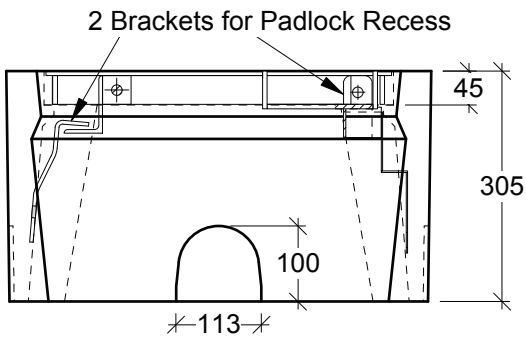
**Plan View**  
**Steel Lid**



**Plan View**

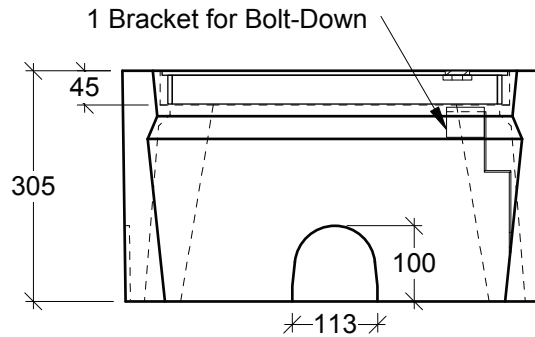


**Plan View**



**Side View**

**Padlock Recess**



**Side View**

**Bolt Down**

**General Notes:**

- Products manufactured in accordance with CSA A23.4
- Designed for Boulevard (Off-Road) Use - H-20 Static Loading
- Steel Products manufactured under CSA W47.1 in accordance to CSA W59
- Site Installation, Backfilling & Suitability for Use is the responsibility of others.



19060 - 54th Avenue  
Surrey, B.C. V3S 8E5

Tel (604) 576-1808  
info@aeconcrete.com

**B937 Box w/ Tamper Proof Lid Options**

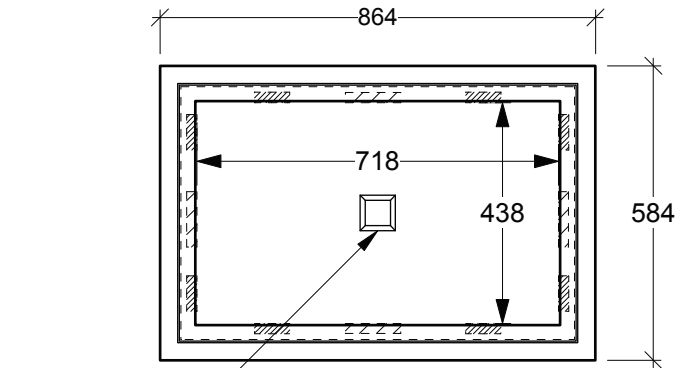
Lid: 20 lbs / 10 kgs  
Box: 105 lbs / 50 kgs  
Total: 125 lbs / 60 kgs

Scale: 1:10 mm

Rev: 28Jun08

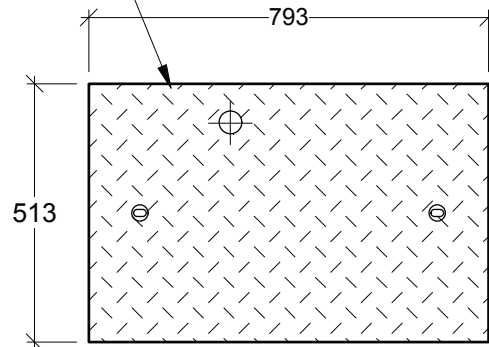
Dwg#: **B937-N3-LREC-C**

Painted Black, Bolt-down, Steel Checker Plate Lids  
**Options:** Galvanizing, Padlock Recess  
 Remote Reader Holes  
 Weld Marking e.g. "ELEC"

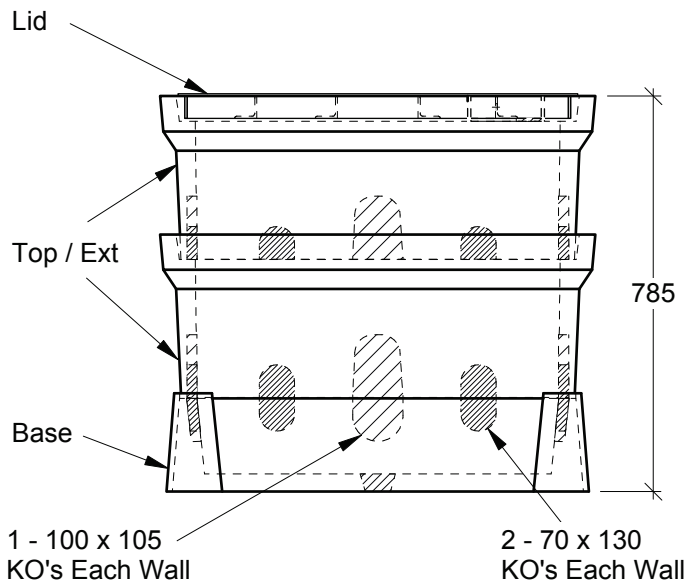


50sq Drain Hole

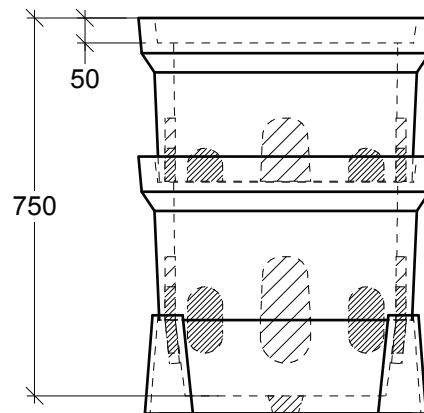
**Plan View**



**Plan View - Lid**



**Side View**



**End View**

**General Notes:**

- Products manufactured in accordance with CSA A23.4
- Designed for Boulevard (Off-Road) Use - H-20 Static Loading
- Steel Products manufactured under CSA W47.1 in accordance to CSA W59
- Site Installation, Backfilling & Suitability for Use is the responsibility of others.



19060 - 54th Avenue  
 Surrey, B.C. V3S 8E5

Tel (604) 576-1808  
 info@aeconcrete.com

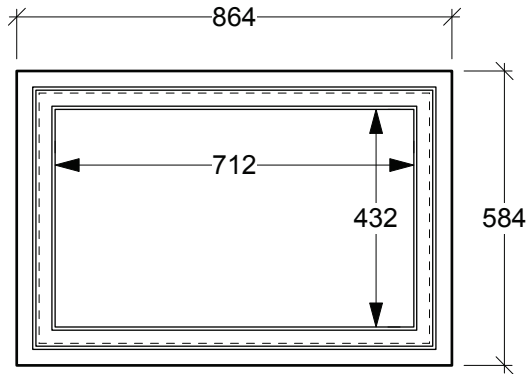
**T266 Service Box - Complete**

Lid: 65 lbs / 30 kgs  
 Top/Ext: 140 lbs / 65 kgs  
 Base: 170 lbs / 30 kgs Total: 515 lbs / 240 kgs

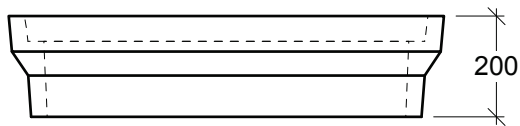
Scale: 1:15 mm

Rev: 28Jun08

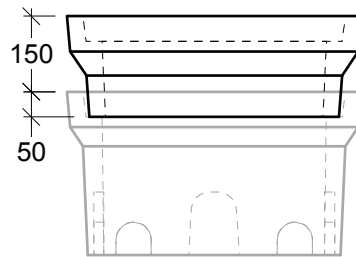
Dwg#: **T266-N3-ZZZZ-C**



**Plan View**



**Side View**



**End View**

**General Notes:**

- Products manufactured in accordance with CSA A23.4
- Designed for Boulevard (Off-Road) Use - H-20 Static Loading
- Site Installation, Backfilling & Suitability for Use is the responsibility of others



19060 - 54th Avenue  
Surrey, B.C. V3S 8E5

Tel (604) 576-1808  
info@aeconcrete.com

**T266 Top / Extension 150 High**

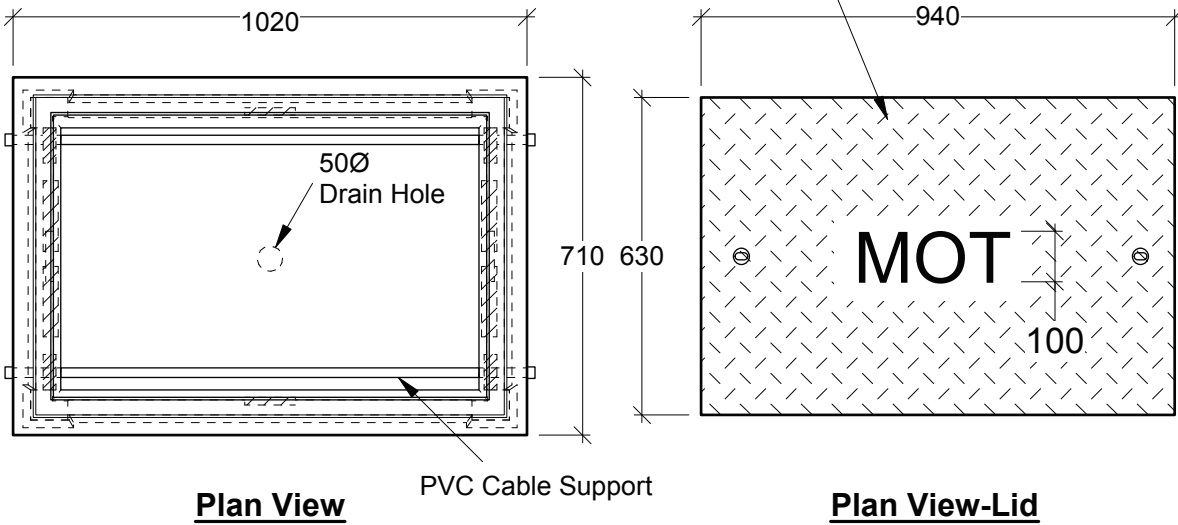
Top/Ext: 70 lbs / 35 kgs

Scale: 1:15 mm

Rev: 28Jun08

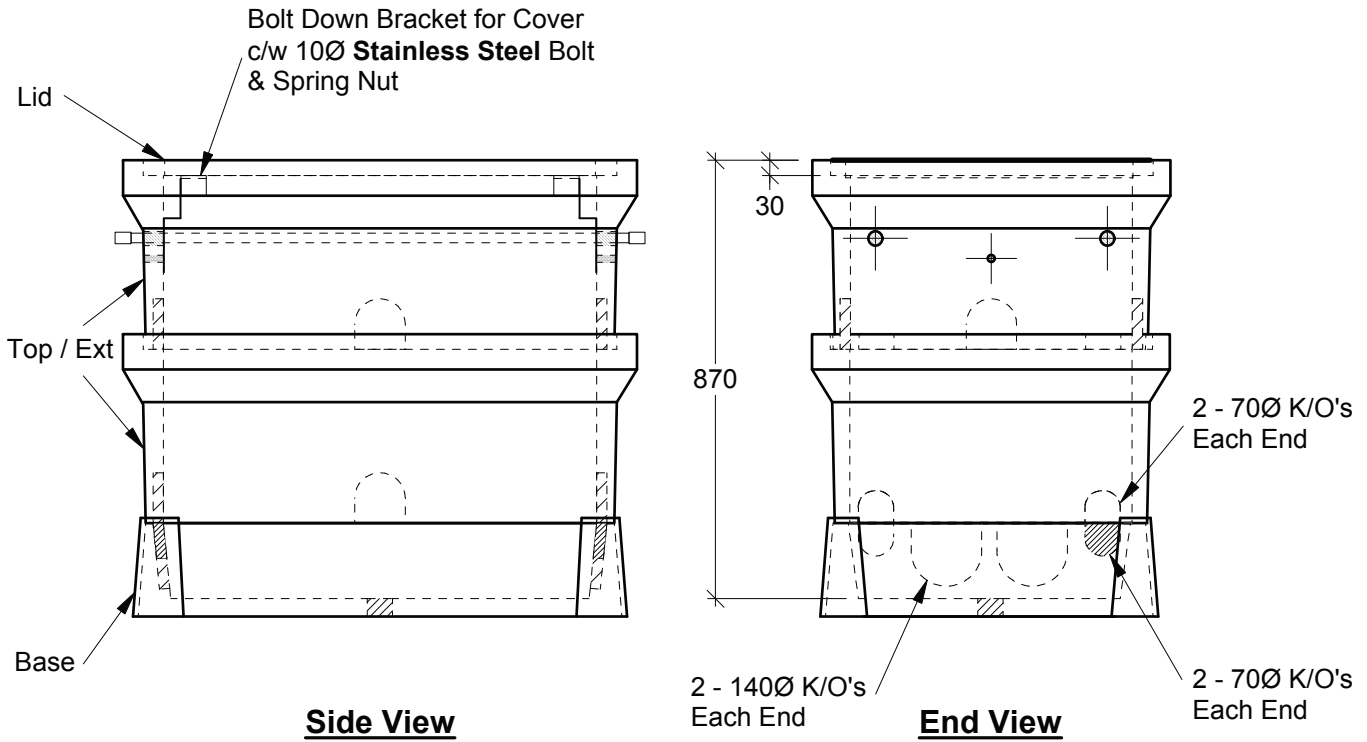
Dwg#: **T266-00-0150-C**

Galvanized Checker Plate  
Marked "MoT"  
w/ Holes for Bolt-down



**Plan View**

**Plan View-Lid**



**Side View**

**End View**

**General Notes:**

- Product manufactured in accordance with CSA A23.4
- Designed for Boulevard (Off-Road) Use - H-20 Static Loading
- Site Installation, Backfilling & Suitability for Use is the responsibility of others



19060 - 54th Avenue  
Surrey, B.C. V3S 8E5

Tel (604) 576-1808  
info@aeconcrete.com

**5686 MoT Pullbox (880mm Deep)**

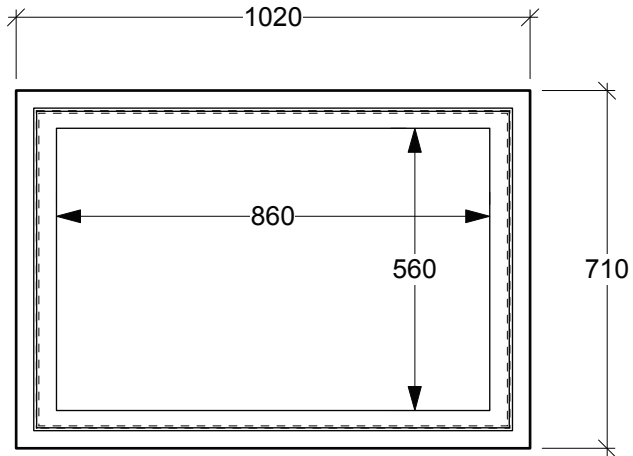
(MoTH Dwg#: SP635-1.3.1, 2000 Dwg# SP235-1.3.2)

Cover: 100 lbs / 45 kgs  
Top/Ext: 195 lbs / 89 kgs  
Base: 175 lbs / 79 kgs Total: 665 lbs / 305 kgs

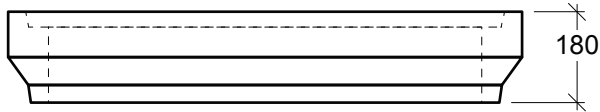
Scale: 1:15 mm

Rev: 28Jun08

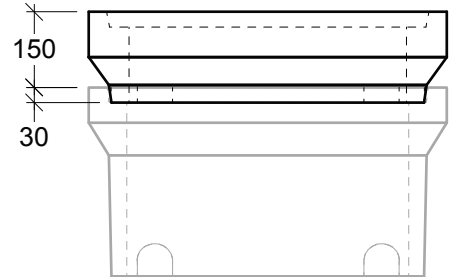
Dwg#: **5686-68-MOTH-C**



**Plan View**



**Side View**



**End View**

**General Notes:**

- Products manufactured in accordance with CSA A23.4
- Designed for Boulevard (Off-Road) Use - H-20 Static Loading
- Site Installation, Backfilling & Suitability for Use is the responsibility of others



19060 - 54th Avenue  
Surrey, B.C. V3S 8E5

Tel (604) 576-1808  
info@aeconcrete.com

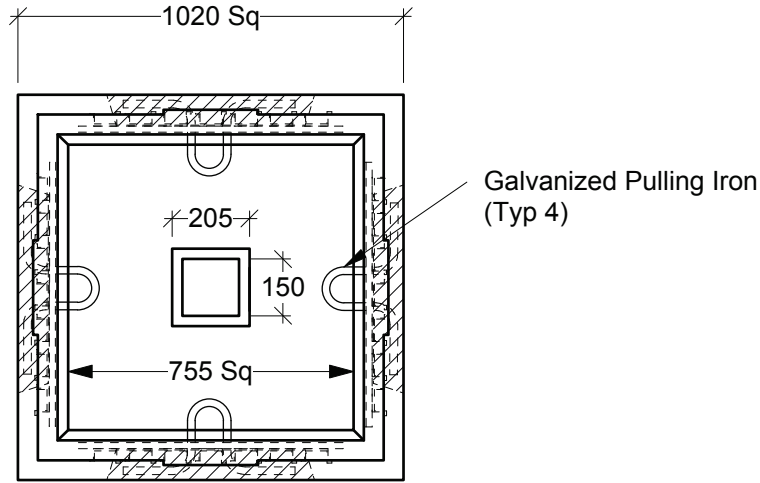
**5686 Top / Extension 150 High**

Top/Ext: 130 lbs / 60 kgs

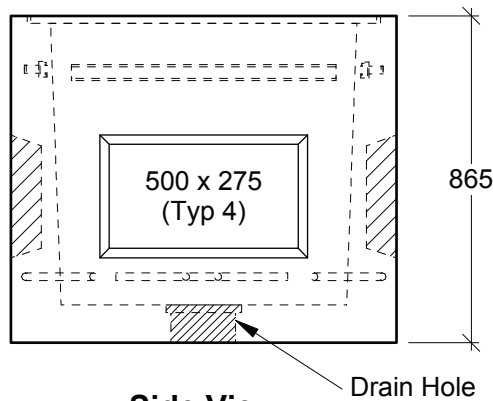
Scale: 1:15 mm

Rev: 25Jan06

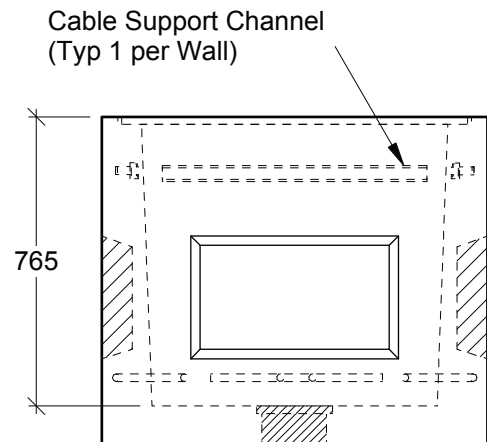
Dwg#: **5686-00-0150-C**



**Plan View**



**Side View**



**End View**

**General Notes:**

- Product manufactured in accordance with CSA A23.4
- Lift Points Provided (See Shop Drawing for Quantity & Locations)
- Designed for Roadway Use - H-20 Traffic Loading
- Site Installation, Backfilling & Suitability for Use is the responsibility of others



19060 - 54th Avenue  
Surrey, B.C. V3S 8E5

Tel (604) 576-1808  
info@aeconcrete.com

**4040 Service Vault**

(Alternate to MoTH Dwg# SP635-1.3.3 & BCH Dwg# ES54 B2-02, Stock# 400-0450)

Box: 2,260 lbs / 1,030 kgs

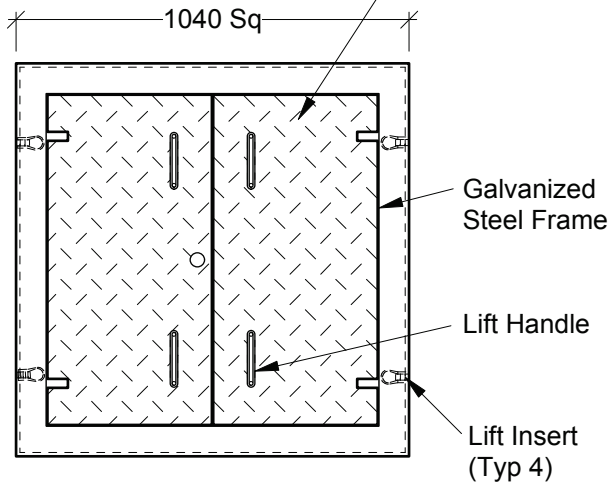
Scale: 1:20 mm

Rev: 19Jan16

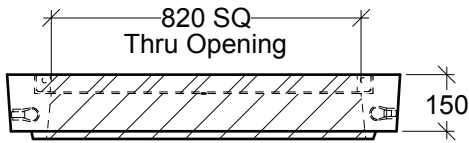
Dwg#: **SVZZ-2B-4040-C**



Painted Black, Bolt-down, Steel Checker Plate Lids  
**Options:** Galvanizing, Padlock Recess  
 Remote Reader Holes  
 Weld Marking e.g. "ELEC"



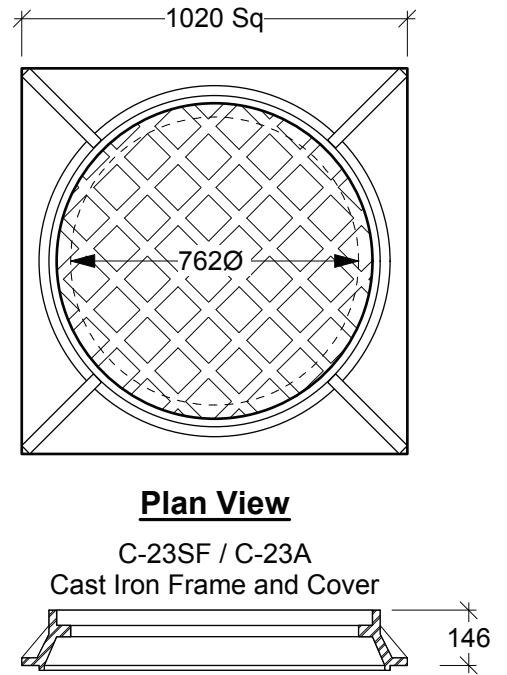
**Plan View**



**Side View**

480 lbs / 218 kgs

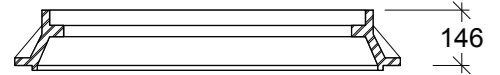
**(A) Boulevard (Off Road) Use Hatch**



**Plan View**

C-23SF / C-23A

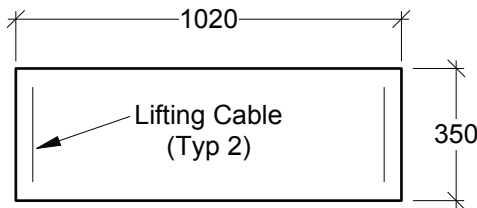
Cast Iron Frame and Cover



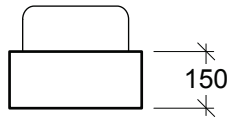
**Side View**

580 lbs / 263 kgs

**(C) Roadway Use H-20 Traffic Loading**



**Plan View**



**End View**

(Typ 3 Required)

300 lbs / 136 kgs Each

**(B) Boulevard (Off Road) Use - Direct Bury**

**General Notes:**

- Product manufactured in accordance with CSA A23.4
- Lift Points Provided (See Shop Drawing for Quantity & Locations)
- Products manufactured under CSA W47.1 in accordance to CSA W59
- Site Installation, Backfilling, Suitability for Use and Engineering Design Approval is the responsibility of others



19060 - 54th Avenue  
 Surrey, B.C. V3S 8E5

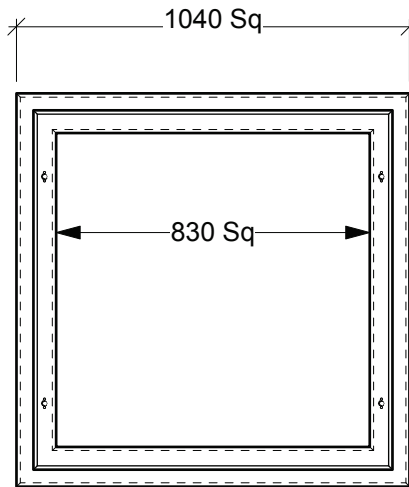
Tel (604) 576-1808  
 info@aeconcrete.com

**4040 Service Vault Covers**

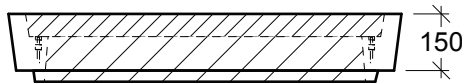
Scale: 1:20 mm

Rev: 22Jul13

Dwg#: **SVZZ-LIDS-4040-C**



**Plan View**



**Side View**

**General Notes:**

- Product manufactured in accordance with CSA A23.4
- Lift Points Provided (See Shop Drawing for Quantity & Locations)
- Site Installation, Backfilling & Suitability for Use is the responsibility of others



19060 - 54th Avenue  
Surrey, B.C. V3S 8E5

Tel (604) 576-1808  
info@aeconcrete.com

**4040 Service Vault Riser 150 High**

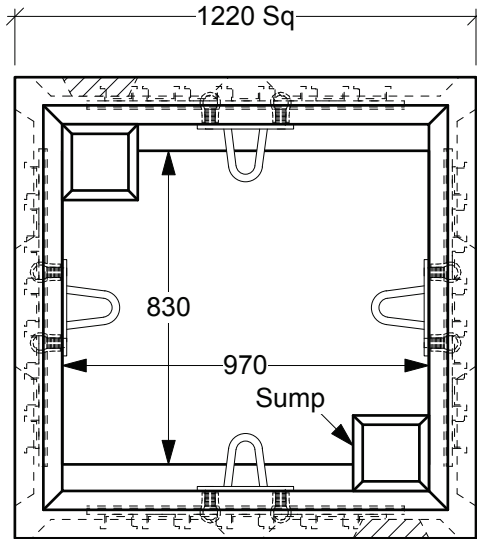
Riser: 260 lbs / 120 kgs

Scale: 1:20 mm

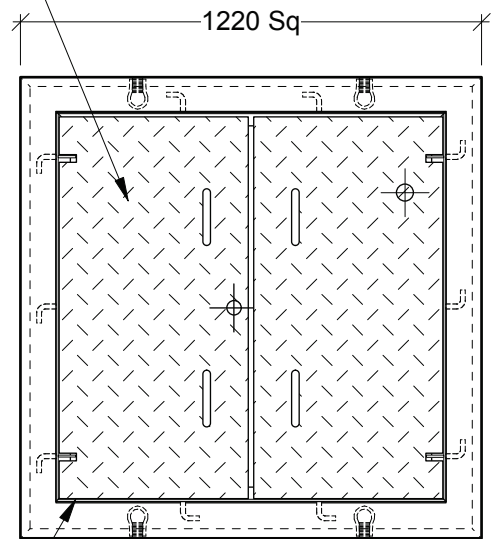
Rev: 28Jun08

Dwg#: **SVZZ-C2-4040-C**

Painted Black, Boltdown, Steel Checker Plate Lids  
**Options:** Galvanizing, Padlock Recess  
 Remote Reader Holes  
 Weld Marking e.g. "ELEC"



**Plan View - Vault**

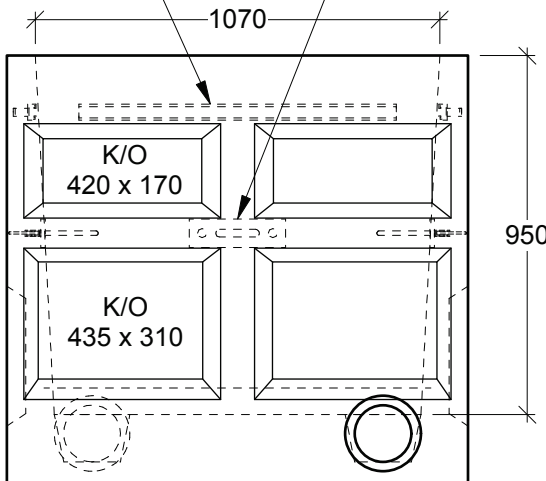


**Plan View - Collar**

Galvanized Frame

Cable Support Channel  
(Typ 1 per Wall)

2 Hole Pulling Iron  
Each Wall (Typ 4)



**Side View**



**End View**

25Ø Pulling Insert  
(Typ 4)

**General Notes:**

- Product manufactured in accordance with CSA A23.4
- Lift Points Provided (See Shop Drawing for Quantity & Locations)
- Site Installation, Backfilling, Suitability for Use and Engineering Design Approval is the responsibility of others



19060 - 54th Avenue  
Surrey, B.C. V3S 8E5

Tel (604) 576-1808  
info@aeconcrete.com

**1.2m Highways Medium Junction Vault**

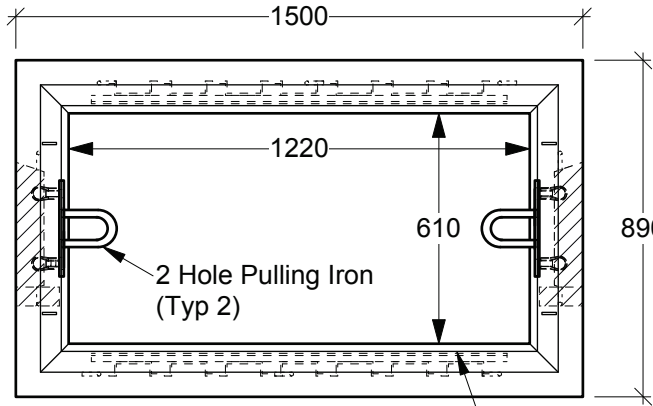
Vault: 3,410 lbs / 1,550 kgs  
Collar: 720 lbs / 330 kgs

Scale: 1:20mm

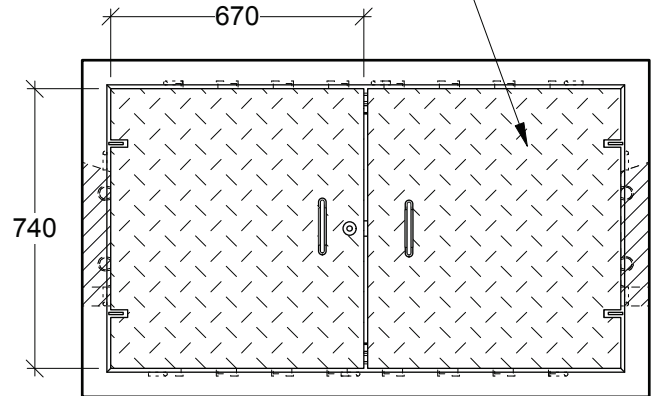
Rev: 28Jun08

Dwg#: **SVHZ-2B-1200-C**

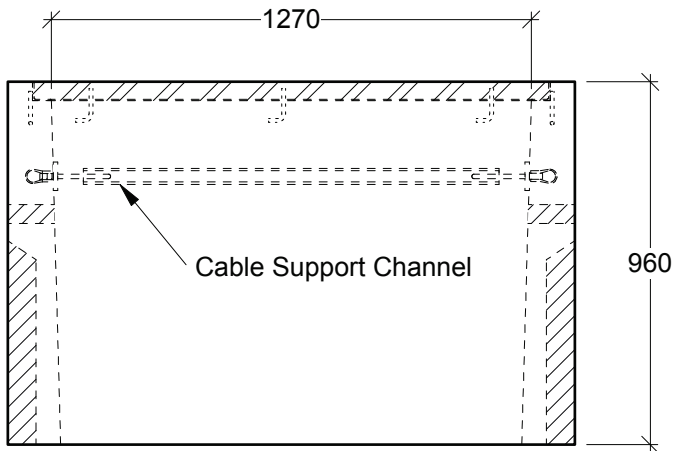
Painted Black, Boltdown, Steel Checker Plate Lids  
**Options:** Galvanizing, Padlock Recess  
 Remote Reader Holes  
 Weld Marking e.g. "ELEC"



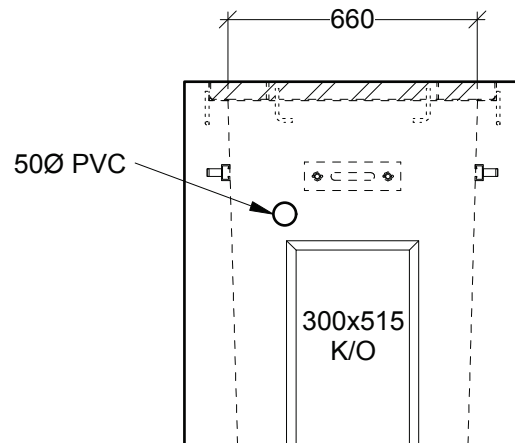
**Plan View - Vault**



**Plan View - Vault w/ Covers**



**Side View**



**End View**

**General Notes:**

- Product manufactured in accordance with CSA A23.4
- Lift Points Provided (See Shop Drawing for Quantity & Locations)
- Designed for Boulevard (Off-Road) Use - H-20 Static Loading
- Site Installation, Backfilling, Suitability for Use and Engineering Design Approval is the responsibility of others



19060 - 54th Avenue  
 Surrey, B.C. V3S 8E5

Tel (604) 576-1808  
 info@aeconcrete.com

**243 MMCD Vault w/ Lid Assembly (Bottomless)**

(2009 MMCD Dwg.# E2.5)

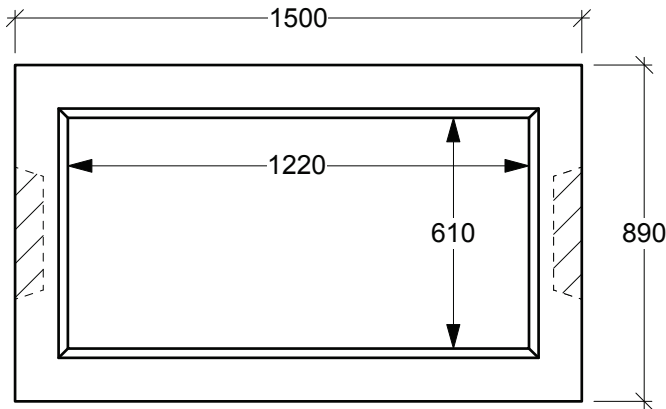
Vault: 2,780 lbs / 1,270 kgs  
 Cover: 370 lbs / 170 kgs

Scale: 1:20 mm

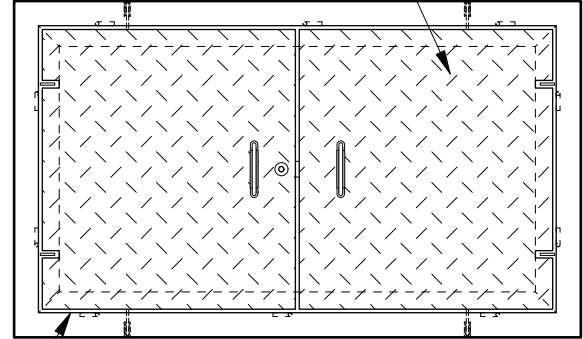
Rev: 22Jul13

Dwg#: **SVVZ-2A-0243-C**

Painted Black, Bolt-down, Steel Checker Plate Lids  
**Options:** Galvanizing, Padlock Recess  
 Remote Reader Holes  
 Weld Marking e.g. "ELEC"

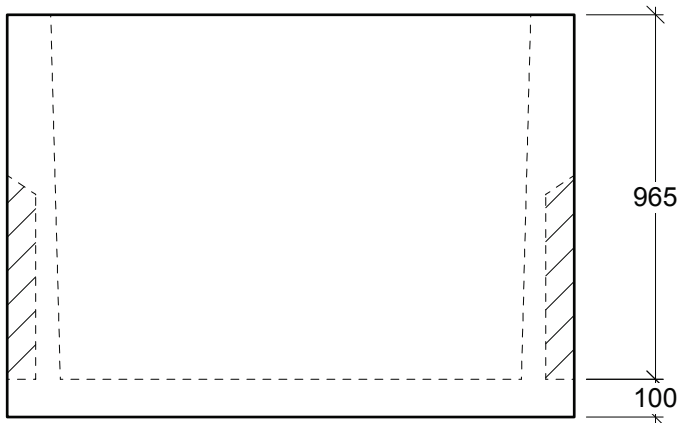
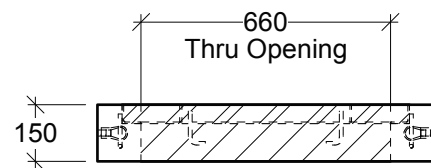


**Plan View**

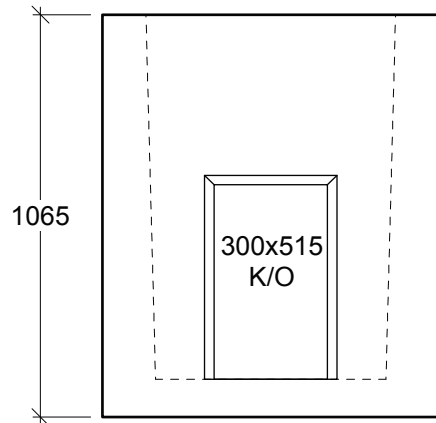


**Plan View - Collar**

Galvanized Steel Frame



**Side View**



**End View**

**General Notes:**

- Product manufactured in accordance with CSA A23.4
- Lift Points Provided (See Shop Drawing for Quantity & Locations)
- Designed for Boulevard (Off-Road) Use - H-20 Static Loading
- Site Installation, Backfilling, Suitability for Use and Engineering Design Approval is the responsibility of others



19060 - 54th Avenue  
 Surrey, B.C. V3S 8E5

Tel (604) 576-1808  
 info@aeconcrete.com

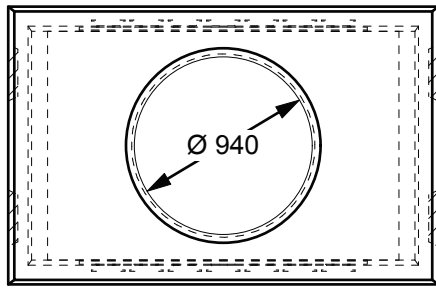
**243 Custom Vault w/ Collar & Lid Assembly**

Vault: 3,530 lbs / 1,610 kgs  
 Collar: 610 lbs / 280 kgs

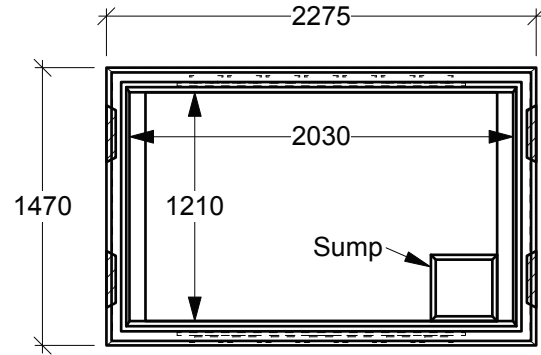
Scale: 1:20 mm

Rev: 22Jul13

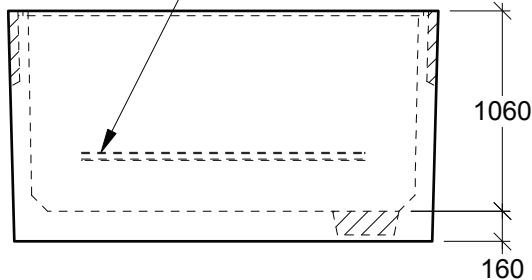
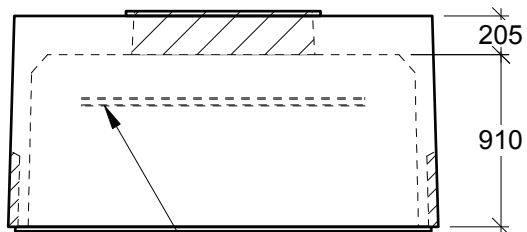
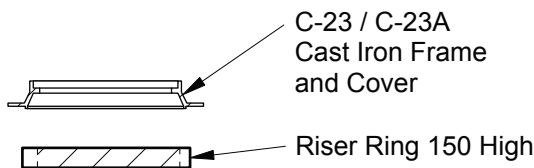
Dwg#: **SVVZ-20-0243-C**



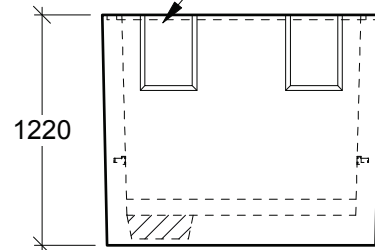
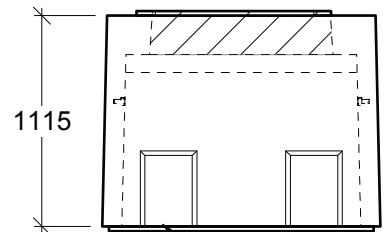
**Plan View - Top**



**Plan View - Bottom**



**Side View**



**End View**

**General Notes:**

- Product manufactured in accordance with CSA A23.4
- Lift Points Provided (See Shop Drawing for Quantity & Locations)
- Designed for Roadway Use - H-20 Traffic Loading
- Design and Provision of Thrust Blocks is the responsibility of others
- Site Installation, Backfilling & Suitability for Use is the responsibility of others



19060 - 54th Avenue  
Surrey, B.C. V3S 8E5

Tel (604) 576-1808  
info@aeconcrete.com

**2122 MoT Communications Vault**

Top: 6,200 lbs / 2,820 kgs  
Btm: 6,700 lbs / 3,040 kgs

Scale: 1:40 mm

Rev: 22Jul13

Dwg#: **VC21-20-MOTH-C**