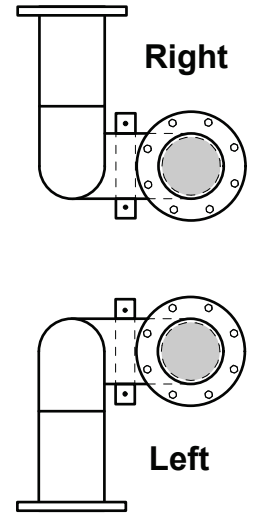
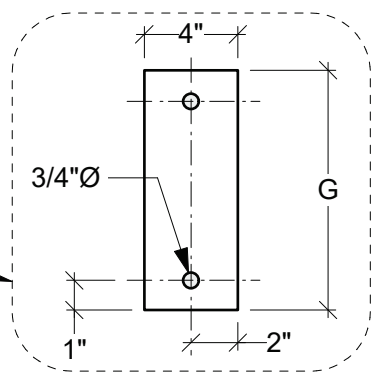


**Inline Side View**



**Optional 90° Orientation**



**Plan View - Mounting Plate**

Requested	Dimension	Standard (Minimum)
	<b>A</b>	Pipe Diameter
	<b>B *</b>	Outlet Invert ( $B > 4 \times A + D$ )
	<b>C</b>	$4 \times A$
	<b>D</b>	$2 \times A + 1/4"$ ( $1.5 \times A + 1/4"$ )
	<b>E</b>	$6 \times A$ ( $4 \times A$ )
	<b>F</b>	As Required (Typ 600)
	<b>G</b>	$A + 4"$

\* Can Reduce to  $(2 \times A + D)$  but may Affect High Flow Characteristics

**General Notes:**

- Optional Epoxy Coated Steel or Stainless Steel Assy
- Size - Range from 2" to 14" Pipe Diameters
- P-Trap Assembly built to suit Application
- Site Installation is the Responsibility of Others



**Enqup Oil Stop Valve**

19060 - 54th Avenue  
Surrey, B.C. V3S 8E5  
Tel (604) 576-1808  
info@aeconcrete.com

Scale: NTS  
Rev: 27Apr18

Dwg#: **SALE-RS-ENQU-C**