

INSTALLATION INSTRUCTIONS - 5686 Superimposed Service Box

The following installation procedure is generic and local ground conditions may dictate necessary changes for the proper Installation of the 5686 Concrete Service Box with **Super-imposed** Frame Curb to achieve the design load and performance. Consult the site engineer for necessary changes.

Reference "5686 Superimposed Service Box - Complete" **Drawing #: 5686-N3-SUPR-C**

The ground must be well drained with a uniform granular material (19mm Road Mulch) well compacted base before installation of the service box commences.

- 1) Excavate and clear trench minimum 305mm wider than the box footprint area. (960mm)
- 2) Ensure proper drainage media for the service box.
- 3) Level the base area and machine tamp as necessary to correct grade.
- 4) For final grade adjustments use sand backfill to level by hand it is important to have a level base in all directions.
- 5) If final grade is unknown due to landscaping or other limitations check with engineered drawings or consult with site engineer.
- 6) Overall Box height should be measured to correspond to final grade. **Note** some variability exists with the concrete sections - **Confirm** box height dimensions to finalize excavation depth. (Total Hgt ~921mm = Concrete box Hgt ~905mm plus ~20mm with Frame on Top)
- 7) The 5686 service box has five main components: Base, Extension, Top Section, Galvanized Perimeter Frame & Steel Lid.
- 8) The base section is installed first and has 2-130 mm and 2-70 mm diameter knockout windows. Select the knockouts required and tap them out with a mason's hammer or saw cut with Diamond Blade.
- 9) Place PVC bell ends & pipe in the base section.
- 10) Now carefully place the extension (375mm) onto the base section. Ensure it is centered and bears fully onto the base section below.
- 11) Apply grout to the inside and outside edges using a non-shrinking grout @ duct entries.
- 12) Now carefully place the Top section onto the extension. Ensure it is centered and bears fully onto the extension below ensuring **~20mm from Top of Box to finished grade.**
- 13) Mark Line on Top Section a **minimum** 130mm from the Top of Concrete for Curb Bottom (150 high minus 20mm Frame)
- 14) Backfill Using multiple lifts (max 305mm) of 19mm granular road mulch material and machine tamp to ensure adequate compaction of each layer of backfill. Ensure no contact with the compactor and the service boxes walls place no points loads onto the Box side and end walls during installation.
- 15) Place Galvanized Steel Perimeter Frame w/ 10M rebar loops onto Top section. Prepare form work to pour the concrete perimeter beam (1270L x 960W x 150 Deep). Use Minimum 30 MPa concrete for this cast-in place design. Ensure that the concrete is vibrated to achieve proper distribution around the concrete box and frame.
- 16) Let concrete cure a minimum of one day before stripping form work before finishing backfilling & final grade surface. Allow the concrete to attain design strength before allowing full design loads on the Box.



19060 - 54th Avenue
Surrey, B.C. V3S 8E5

Tel (604) 576-1808
info@aeconcrete.com

5686 Superimposed - Installation Instructions

Scale:

Rev: 13Sep17

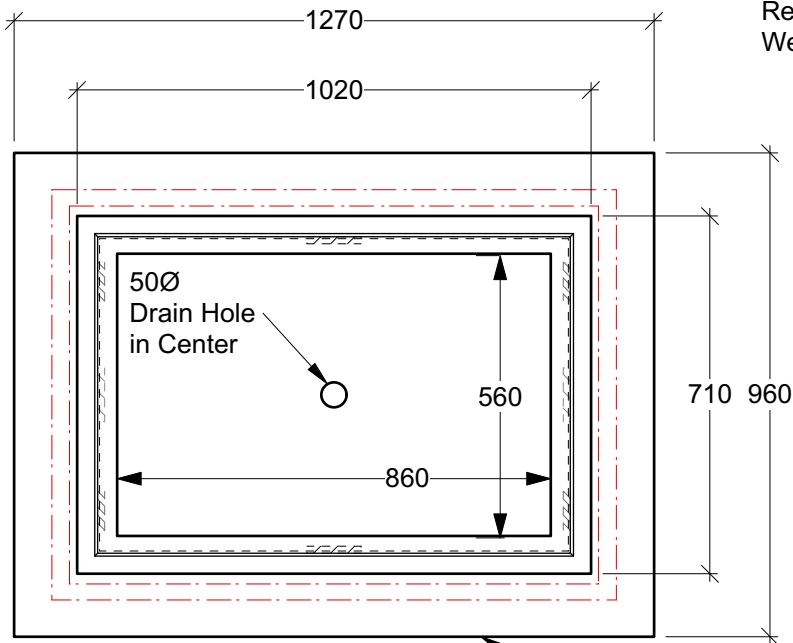
Dwg#: **5686-SUPR-INST**

Painted Black, Bolt-down, Steel Checker Plate Lids

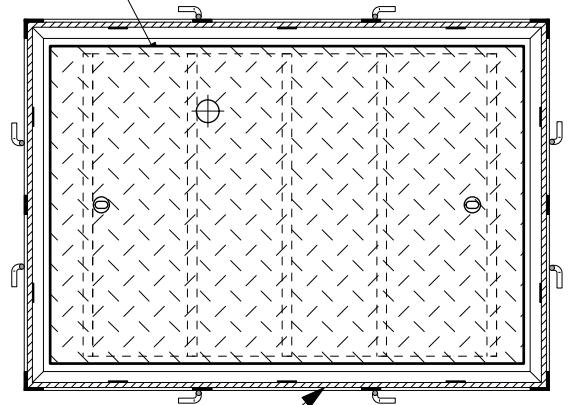
Options: Galvanizing, Padlock Recess

Remote Reader Holes

Weld Marking e.g. "ELEC"

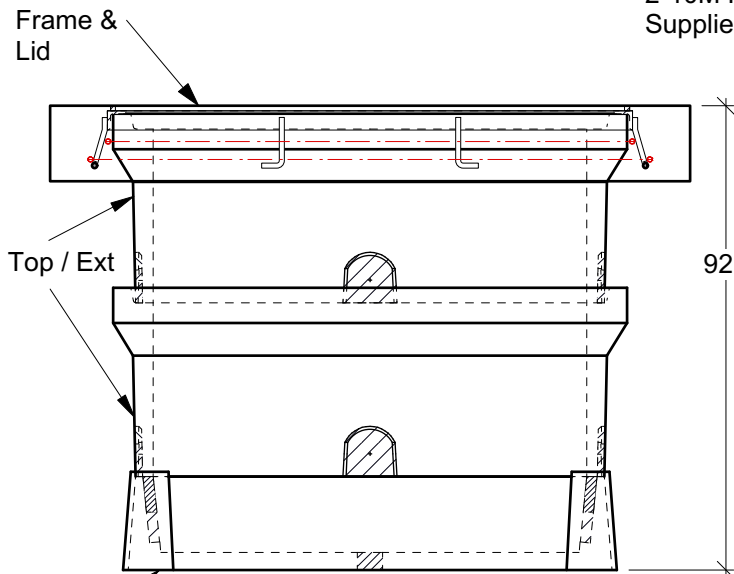


Plan View

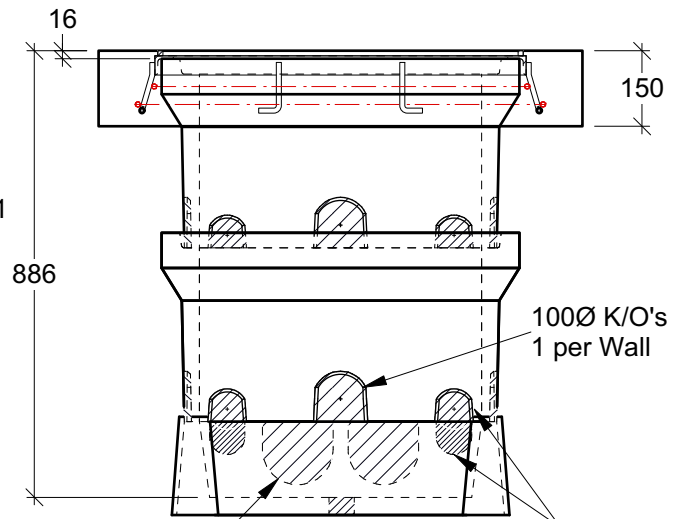


**Plan View
Steel Frame & Lid**

Note:
Concrete Perimeter
to be Cast-in Place
by Others
2-10M Rebar Bands
Supplied w/ Frame



Side View



End View

General Notes:

- Products Manufactured in Accordance with CSA A23.4
- Designed for Boulevard (Off-Road) Use - Occasional H-20 Loading
- Steel Products Manufactured under CSA W47.1 in Accordance with CSA W59
- Site Installation, Backfilling & Suitability for Use is the Responsibility of Others



5686 Superimposed Service Box - Complete

(w/ Frame & Cover)

Lid: 110 lbs / 50 kgs	Base: 175 lbs / 80 kgs
Frame: 35 lbs / 15 kgs	
Top/Ext: 195 lbs / 90 kgs	Total: 710 lbs / 325 kgs

Rev: 10Jun25

Dwg#: **5686-N3-SUPR-C**

Tel (604) 576-1808

sales@aeconcrete.com

SAP#: 1138 + LID