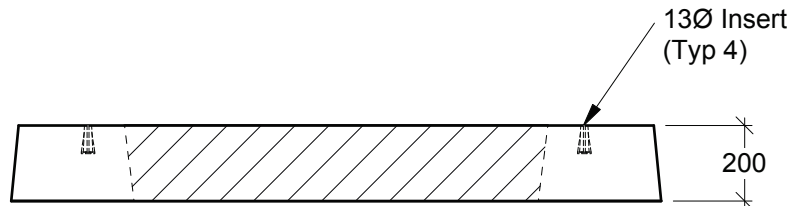


Plan View



Side View

General Notes:

- Product manufactured in accordance with CSA A23.4
- Lift Points Provided (See Shop Drawing for Quantity & Locations)
- Site Installation, Backfilling & Suitability for Use is the responsibility of others



19060 - 54th Avenue
Surrey, B.C. V3S 8E5

Tel (604) 576-1808
info@aeconcrete.com

3 Phase Transformer (5x5) Pad

(BCH Dwg# ES54 F3-04, BCH Stk# 400-0853)

Pad: 2,570 lbs / 1,170 kgs

Scale: 1:20 mm

Rev: 28Jun08

Dwg#: **HPAD-ZZ-1500-C**